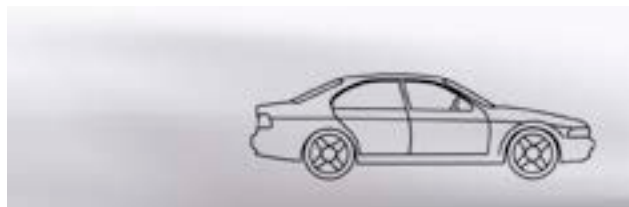


FERODO NEW PRODUCT LINE

DRUMS



YOU'RE IN CONTROL

NEW RANGE OF FERODO BRAKE DRUMS NOW AVAILABLE



www.ferodo.com



FEDERAL-MOGUL
MOTORPARTS



NEW DRUM PRODUCT LINE ADDED TO FERODO RANGE

PRODUCT FEATURES AND BENEFITS

- Ferodo Drums are pre-machined and balanced to save installers valuable time
- High quality cast materials and state-of-the art machining



VEHICLE MANUFACTURERS INDEX

ALFA ROMEO	3
AUDI	3
AUTOBIANCHI	3
BEDFORD	3
BMW	3
CHEVROLET	5
CHRYSLER	5
CITROËN	5
DACIA	7
DAEWOO	7
DAIHATSU	7
DALLAS	7
DODGE	7
FIAT	7
FORD	11
GEO	15
HONDA	15
HYUNDAI	17
ISUZU	17
IVECO	17
JEEP	17
KIA	17
LANCIA	19
LAND ROVER	19
MAZDA	19
MERCEDES-BENZ	19
MITSUBISHI	21
NISSAN	21
OPEL	21
PEUGEOT	27
PLYMOUTH	29
PROTON	29
RENAULT	31
ROVER	31
SEAT	33
SKODA	33
SMART	35
SUBARU	35
SUZUKI	35
TOYOTA	35
VAUXHALL	37
VW	39
YUGO	41
ZASTAVA	41



APPLICATION	FERODO PARTNO	DIAMETER Ø [MM]	HEIGHT [MM]	BORE [MM]	FIXING HOLES NO.	BEARING	FITTING AXLE
ALFA ROMEO							
145 (930)	FDR329006	228,3	61,1	59	4+2+1	N	REAR
145 (930)	FDR329211	203,3	61	59	4+2+1	N	REAR
146 (930)	FDR329006	228,3	61,1	59	4+2+1	N	REAR
146 (930)	FDR329211	203,3	61	59	4+2+1	N	REAR
AR 6 Box (280)	FDR329008	254,3	98	72	5+3+2	N	REAR
AR 6 Bus (280)	FDR329008	254,3	98	72	5+3+2	N	REAR
AR 8 Box (280)	FDR329009	254	122,5	129,8	6+1	N	REAR
AR 8 Platform/Chassis (280)	FDR329009	254	122,5	129,8	6+1	N	REAR
AUDI							
100 (43, C2)	FDR329133	230	89,7	45.161/50.215	4	N	REAR
100 (44, 44Q, C3)	FDR329133	230	89,7	45.161/50.215	4	N	REAR
100 Avant (43, C2)	FDR329133	230	89,7	45.161/50.215	4	N	REAR
100 Avant (44, 44Q, C3)	FDR329133	230	89,7	45.161/50.215	4	N	REAR
50 (86)	FDR329705*	180	74,6	39.82/50.23	4	Y	REAR
80 (80, 82, B1)	FDR329705*	180	74,6	39.82/50.23	4	Y	REAR
80 (80, 82, B1)	FDR329704	200	81,5	39.801/50.215	4	N	REAR
80 (81, 85, B2)	FDR329705*	180	74,6	39.82/50.23	4	Y	REAR
80 (81, 85, B2)	FDR329704	200	81,5	39.801/50.215	4	N	REAR
80 (89, 89Q, 8A, B3)	FDR329229	200	80,5	39.801/50.215	4	N	REAR
80 (89, 89Q, 8A, B3)	FDR329133	230	89,7	45.161/50.215	4	N	REAR
80 (89, 89Q, 8A, B3)	FDR329704	200	81,5	39.801/50.215	4	N	REAR
80 (8C, B4)	FDR329133	230	89,7	45.161/50.215	4	N	REAR
80 Avant (8C, B4)	FDR329133	230	89,7	45.161/50.215	4	N	REAR
90 (81, 85, B2)	FDR329704	200	81,5	39.801/50.215	4	N	REAR
90 (81, 85, B2)	FDR329229	200	80,5	39.801/50.215	4	N	REAR
90 (89, 89Q, 8A, B3)	FDR329229	200	80,5	39.801/50.215	4	N	REAR
90 (89, 89Q, 8A, B3)	FDR329133	230	89,7	45.161/50.215	4	N	REAR
A2 (8Z0)	FDR329253	200	59,1	65	5+1	N	REAR
A2 (8Z0) for PR Code 1KB	FDR329253	200	59,1	65	5+1	N	REAR
COUPE (81, 85)	FDR329704	200	81,5	39.801/50.215	4	N	REAR
COUPE (81, 85)	FDR329705*	180	74,6	39.82/50.23	4	Y	REAR
COUPE (81, 85)	FDR329229	200	80,5	39.801/50.215	4	N	REAR
AUTOBIANCHI							
A 112	FDR329000	185,4	53,3	59	4+2	N	REAR
Y10	FDR329000	185,4	53,3	59	4+2	N	REAR
BEDFORD							
ASTRA VAN Estate	FDR329202	200	66,5	57	4+1	N	REAR
ASTRA VAN Estate	FDR329204	230	75,8	57	4+1	N	REAR
ASTRAMAX Estate	FDR329204	230	75,8	57	4+1	N	REAR
CHEVANNE	FDR329202	200	66,5	57	4+1	N	REAR
MIDI Box	FDR329006	228,3	61,1	59	4+2+1	N	REAR
MIDI Bus	FDR329006	228,3	61,1	59	4+2+1	N	REAR
BMW							
3 (E30)	FDR329029	228,6	58,5	62	4+1	N	REAR
3 (E36)	FDR329030	228,5	58,7	75,1	5+1	N	REAR
3 Compact (E36)	FDR329030	228,5	58,7	75,1	5+1	N	REAR
3 Convertible (E30)	FDR329029	228,6	58,5	62	4+1	N	REAR
3 Convertible (E36)	FDR329030	228,5	58,7	75,1	5+1	N	REAR
3 Coupe (E36)	FDR329030	228,5	58,7	75,1	5+1	N	REAR



APPLICATION	FERODO PARTNO	DIAMETER Ø [MM]	HEIGHT [MM]	BORE [MM]	FIXING HOLES NO.	BEARING	FITTING AXLE
CHEVROLET							
CORSA Estate / for vehicles without ABS	FDR329238	230,1	66,4	57	4+1	N	REAR
CORSA Pickup / for vehicles with ABS	FDR329203	200	84,3	39.801/50.19	4	N	REAR
CORSA Saloon / for vehicles with ABS	FDR329203	200	84,3	39.801/50.19	4	N	REAR
CORSA Saloon / for vehicles without ABS	FDR329238	230,1	66,4	57	4+1	N	REAR
LANOS Saloon / for vehicles with ABS	FDR329202	200	66,5	57	4+1	N	REAR
LANOS Saloon / for vehicles without ABS	FDR329292	200	80,8	39.801/50.215	4	N	REAR
MATIZ (M200, M250)	FDR329246	180	79,6	46.898/51.918	4	N	REAR
CHRYSLER							
GRAND VOYAGER V (RT)	FDR329346	250	77,7	72,1	5	N	REAR
VOYAGER I (AS)	FDR329291	228,5	103	57,5	5	N	REAR
VOYAGER I (AS)	FDR329347	228,3	106,2	72	5	N	REAR
VOYAGER II (ES)	FDR329278	279,3	114,6	72,1	5	N	REAR
VOYAGER II (ES)	FDR329291	228,5	103	57,5	5	N	REAR
VOYAGER II (ES)	FDR329347	228,3	106,2	72	5	N	REAR
VOYAGER III (GS)	FDR329290	250	77,6	57,5	5	N	REAR
VOYAGER III (GS) / for vehicles without ABS	FDR329346	250	77,7	72,1	5	N	REAR
VOYAGER IV (RG, RS)	FDR329290	250	77,6	57,5	5	N	REAR
VOYAGER IV (RG, RS)	FDR329346	250	77,7	72,1	5	N	REAR
CITROËN							
AX (ZA-_)	FDR329158	180	80	51,916	4	N	REAR
AX (ZA-_) / for vehicles without ABS	FDR329156	165	58	55,916	3	N	REAR
AX (ZA-_) / for vehicles without ABS	FDR329122	180	81,6	51,93	4	N	REAR
BERLINGO (B9)	FDR329150	228,5	65,9	71,1	4+2	N	REAR
BERLINGO (MF) / for vehicles without ABS	FDR329150	228,5	65,9	71,1	4+2	N	REAR
BERLINGO Box (B9) / for vehicles without ABS	FDR329150	228,5	65,9	71,1	4+2	N	REAR
BERLINGO Box (M_)	FDR329150	228,5	65,9	71,1	4+2	N	REAR
C1 (PM_, PN_)	FDR329265	200	53,7	55	4+2+1	N	REAR
C15 (VD-_)	FDR329150	228,5	65,9	71,1	4+2	N	REAR
C2 (JM_)	FDR329716	203	71,4	51,884	4	N	REAR
C2 ENTERPRISE	FDR329716	203	71,4	51,884	4	N	REAR
C25 Box (280_, 290_)	FDR329008	254,3	98	72	5+3+2	N	REAR
C25 Bus (280_, 290_)	FDR329008	254,3	98	72	5+3+2	N	REAR
C25 Platform/Chassis (280_, 290_)	FDR329008	254,3	98	72	5+3+2	N	REAR
C3 I (FC_) / for vehicles without ABS	FDR329716	203	71,4	51,884	4	N	REAR
C3 II	FDR329716	203	71,4	51,884	4	N	REAR
C3 Pluriel (HB_)	FDR329716	203	71,4	51,884	4	N	REAR
EVASION (22, U6)	FDR329012	255	85	59	5+1	N	REAR
JUMPER Box (230L)	FDR329008	254,3	98	72	5+3+2	N	REAR
JUMPER Box (230L)	FDR329011	254	98	79	5+3+2	N	REAR
JUMPER Box (244)	FDR329008	254,3	98	72	5+3+2	N	REAR
JUMPER Bus (230P)	FDR329008	254,3	98	72	5+3+2	N	REAR
JUMPER Bus (230P)	FDR329011	254	98	79	5+3+2	N	REAR
JUMPER Bus (244, Z_)	FDR329008	254,3	98	72	5+3+2	N	REAR
JUMPER Platform/Chassis (230)	FDR329008	254,3	98	72	5+3+2	N	REAR
JUMPER Platform/Chassis (230)	FDR329011	254	98	79	5+3+2	N	REAR
JUMPER Platform/Chassis (244)	FDR329008	254,3	98	72	5+3+2	N	REAR
JUMPY (U6U)	FDR329012	255	85	59	5+1	N	REAR
JUMPY Box (BS_, BT_, BY_, BZ_)	FDR329012	255	85	59	5+1	N	REAR
JUMPY Platform/Chassis (BU_, BV_, BW_, BX_)	FDR329012	255	85	59	5+1	N	REAR
SAXO (S0, S1)	FDR329158	180	80	51,916	4	N	REAR
SAXO (S0, S1) / for vehicles with ABS	FDR329245	203	71,4	51,884	4	N	REAR
SAXO (S0, S1) / for vehicles with ABS	FDR329156	165	58	55,916	3	N	REAR
SAXO (S0, S1) / for vehicles without ABS	FDR329156	165	58	55,916	3	N	REAR
SAXO (S0, S1) / for vehicles without ABS	FDR329158	180	80	51,916	4	N	REAR



APPLICATION	FERODO PARTNO	DIAMETER Ø [MM]	HEIGHT [MM]	BORE [MM]	FIXING HOLES NO.	BEARING	FITTING AXLE
VISA	FDR329151	180	70,7	51,884	4	N	REAR
XSARA (N1) / for vehicles without ABS	FDR329122	180	81,6	51,93	4	N	REAR
XSARA Break (N2)	FDR329122	180	81,6	51,93	4	N	REAR
XSARA Break (N2) / for vehicles with ABS	FDR329150	228,5	65,9	71,1	4+2	N	REAR
XSARA Coupe (N0) / for vehicles without ABS	FDR329122	180	81,6	51,93	4	N	REAR
XSARA PICASSO (N68) / for vehicles without ABS	FDR329150	228,5	65,9	71,1	4+2	N	REAR
ZX (N2) / for vehicles without ABS	FDR329122	180	81,6	51,93	4	N	REAR
ZX Break (N2) / for vehicles without ABS	FDR329150	228,5	65,9	71,1	4+2	N	REAR
ZX Break (N2) / for vehicles without ABS	FDR329122	180	81,6	51,93	4	N	REAR
DACIA							
LOGAN (LS_)	FDR329224	180	83	51,884	4+2	N	REAR
LOGAN EXPRESS (FS_)	FDR329224	180	83	51,884	4+2	N	REAR
LOGAN MCV (KS_)	FDR329224	180	83	51,884	4+2	N	REAR
DAEWOO							
ARANOS	FDR329292	200	80,8	39.801/50.215	4	N	REAR
CIELO	FDR329202	200	66,5	57	4+1	N	REAR
ESPERO (KLEJ)	FDR329292	200	80,8	39.801/50.215	4	N	REAR
ESPERO (KLEJ) / for vehicles with ABS	FDR329202	200	66,5	57	4+1	N	REAR
LANOS (KLAT) / for vehicles with ABS	FDR329202	200	66,5	57	4+1	N	REAR
LANOS (KLAT) / for vehicles without ABS	FDR329292	200	80,8	39.801/50.215	4	N	REAR
LANOS Saloon (KLAT) / for vehicles with ABS	FDR329202	200	66,5	57	4+1	N	REAR
LANOS Saloon (KLAT) / for vehicles without ABS	FDR329292	200	80,8	39.801/50.215	4	N	REAR
LEMANS	FDR329202	200	66,5	57	4+1	N	REAR
MATIZ (KLYA)	FDR329246	180	79,6	46.898/51.918	4	N	REAR
NEXIA (KLETN)	FDR329202	200	66,5	57	4+1	N	REAR
NEXIA Saloon (KLETN)	FDR329202	200	66,5	57	4+1	N	REAR
NUBIRA (KLAJ)	FDR329202	200	66,5	57	4+1	N	REAR
DAIHATSU							
CHARADE III (G100, G101, G102)	FDR329317*	180	87,2	51,916	4	N	REAR
CHARADE IV (G200, G202)	FDR329317*	180	87,2	51,916	4	N	REAR
CUORE III (L201)	FDR329283*	165	62	51,916	4	N	REAR
CUORE IV (L501)	FDR329283*	165	62	51,916	4	N	REAR
MOVE (L6_, L9_)	FDR329283*	165	62	51,916	4	N	REAR
DALLAS							
FUN	FDR329151	180	70,7	51,884	4	N	REAR
DODGE							
CARAVAN	FDR329291	228,5	103	57,5	5	N	REAR
CARAVAN	FDR329347	228,3	106,2	72	5	N	REAR
CARAVAN (RG_)	FDR329346	250	77,7	72,1	5	N	REAR
CARAVAN / for vehicles without ABS	FDR329290	250	77,6	57,5	5	N	REAR
CARAVAN / for vehicles without ABS	FDR329346	250	77,7	72,1	5	N	REAR
FIAT							
126 (126_)	FDR329000	185,4	53,3	59	4+2	N	REAR
126 (126_)	FDR329208	170,3	67,1	34.912/36.911	4+1	N	FRONT
126 (126_)	FDR329209	170,1	56,6	34,1	4+4+1	N	REAR
127 (127_)	FDR329000	185,4	53,3	59	4+2	N	REAR
127 Panorama (127_)	FDR329000	185,4	53,3	59	4+2	N	REAR
128 (128_)	FDR329000	185,4	53,3	59	4+2	N	REAR
128 Coupe (128_)	FDR329000	185,4	53,3	59	4+2	N	REAR



APPLICATION	FERODO PARTNO	DIAMETER Ø [MM]	HEIGHT [MM]	BORE [MM]	FIXING HOLES NO.	BEARING	FITTING AXLE
128 Familiare (128_)	FDR329000	185,4	53,3	59	4+2	N	REAR
147	FDR329000	185,4	53,3	59	4+2	N	REAR
500	FDR329208	170,3	67,1	34.912/36.911	4+1	N	FRONT
500	FDR329209	170,1	56,6	34,1	4+4+1	N	REAR
500 (312)	FDR329005	180	53,8	59	4+2+1	N	REAR
500 C (312)	FDR329005	180	53,8	59	4+2+1	N	REAR
500 Estate	FDR329208	170,3	67,1	34.912/36.911	4+1	N	FRONT
500 Estate	FDR329209	170,1	56,6	34,1	4+4+1	N	REAR
850	FDR329000	185,4	53,3	59	4+2	N	REAR
850 Coupe (100_)	FDR329000	185,4	53,3	59	4+2	N	REAR
850 Spider	FDR329000	185,4	53,3	59	4+2	N	REAR
900 T/E Panorama (200_)	FDR329000	185,4	53,3	59	4+2	N	REAR
900 T/E Pulmino (200_)	FDR329000	185,4	53,3	59	4+2	N	REAR
BRAVA (182)	FDR329005	180	53,8	59	4+2+1	N	REAR
BRAVA (182) / for vehicles with ABS	FDR329211	203,3	61	59	4+2+1	N	REAR
BRAVO I (182)	FDR329005	180	53,8	59	4+2+1	N	REAR
BRAVO I (182) / for vehicles with ABS	FDR329211	203,3	61	59	4+2+1	N	REAR
CINQUECENTO (170)	FDR329000	185,4	53,3	59	4+2	N	REAR
DOBLO (119)	FDR329006	228,3	61,1	59	4+2+1	N	REAR
DOBLO Cargo (223)	FDR329006	228,3	61,1	59	4+2+1	N	REAR
DOBLO MPV (223, 119)	FDR329006	228,3	61,1	59	4+2+1	N	REAR
DUCATO Box (230L)	FDR329008	254,3	98	72	5+3+2	N	REAR
DUCATO Box (230L)	FDR329011	254	98	79	5+3+2	N	REAR
DUCATO Box (230L) 16" rims	FDR329011	254	98	79	5+3+2	N	REAR
DUCATO Box (244)	FDR329008	254,3	98	72	5+3+2	N	REAR
DUCATO Box (280)	FDR329008	254,3	98	72	5+3+2	N	REAR
DUCATO Box (280) 16" rims	FDR329008	254,3	98	72	5+3+2	N	REAR
DUCATO Box (290)	FDR329008	254,3	98	72	5+3+2	N	REAR
DUCATO Box (290) 14" rims	FDR329008	254,3	98	72	5+3+2	N	REAR
DUCATO Box (290) 16" rims	FDR329008	254,3	98	72	5+3+2	N	REAR
DUCATO Bus (230)	FDR329008	254,3	98	72	5+3+2	N	REAR
DUCATO Bus (230)	FDR329011	254	98	79	5+3+2	N	REAR
DUCATO Bus (230) 16" rims	FDR329011	254	98	79	5+3+2	N	REAR
DUCATO Bus (244, Z_)	FDR329008	254,3	98	72	5+3+2	N	REAR
DUCATO Panorama (280)	FDR329008	254,3	98	72	5+3+2	N	REAR
DUCATO Panorama (280) 16" rims	FDR329008	254,3	98	72	5+3+2	N	REAR
DUCATO Panorama (290)	FDR329008	254,3	98	72	5+3+2	N	REAR
DUCATO Panorama (290) 14" rims	FDR329008	254,3	98	72	5+3+2	N	REAR
DUCATO Panorama (290) 16" rims	FDR329008	254,3	98	72	5+3+2	N	REAR
DUCATO Platform/Chassis (230)	FDR329008	254,3	98	72	5+3+2	N	REAR
DUCATO Platform/Chassis (230)	FDR329011	254	98	79	5+3+2	N	REAR
DUCATO Platform/Chassis (230) 16" rims	FDR329011	254	98	79	5+3+2	N	REAR
DUCATO Platform/Chassis (244)	FDR329008	254,3	98	72	5+3+2	N	REAR
DUCATO Platform/Chassis (280)	FDR329008	254,3	98	72	5+3+2	N	REAR
DUCATO Platform/Chassis (290)	FDR329008	254,3	98	72	5+3+2	N	REAR
DUCATO Platform/Chassis (290) 14" rims	FDR329008	254,3	98	72	5+3+2	N	REAR
DUCATO Platform/Chassis (290) 16" rims	FDR329008	254,3	98	72	5+3+2	N	REAR
DUNA (146 B)	FDR329000	185,4	53,3	59	4+2	N	REAR
DUNA Saloon	FDR329000	185,4	53,3	59	4+2	N	REAR
DUNA Weekend (146 B)	FDR329000	185,4	53,3	59	4+2	N	REAR
ELBA (146_)	FDR329000	185,4	53,3	59	4+2	N	REAR
FIORINO (127)	FDR329000	185,4	53,3	59	4+2	N	REAR
FIORINO (147)	FDR329000	185,4	53,3	59	4+2	N	REAR
FIORINO (147)	FDR329006	228,3	61,1	59	4+2+1	N	REAR
FIORINO Box (146)	FDR329000	185,4	53,3	59	4+2	N	REAR
FIORINO Box (146)	FDR329006	228,3	61,1	59	4+2+1	N	REAR
FIORINO Box Body / Estate (225)	FDR329211	203,3	61	59	4+2+1	N	REAR
FIORINO Pick up (146)	FDR329000	185,4	53,3	59	4+2	N	REAR



APPLICATION	FERODO PARTNO	DIAMETER Ø [MM]	HEIGHT [MM]	BORE [MM]	FIXING HOLES NO.	BEARING	FITTING AXLE
FIORINO Pick up (146)	FDR329006	228,3	61,1	59	4+2+1	N	REAR
FIORINO Pick up (147)	FDR329000	185,4	53,3	59	4+2	N	REAR
GRANDE PUNTO (199)	FDR329005	180	53,8	59	4+2+1	N	REAR
GRANDE PUNTO (199)	FDR329211	203,3	61	59	4+2+1	N	REAR
IDEA (350_)	FDR329211	203,3	61	59	4+2+1	N	REAR
IDEA (350_)	FDR329006	228,3	61,1	59	4+2+1	N	REAR
MAREA (185)	FDR329211	203,3	61	59	4+2+1	N	REAR
MAREA (185)	FDR329006	228,3	61,1	59	4+2+1	N	REAR
MAREA Weekend (185)	FDR329006	228,3	61,1	59	4+2+1	N	REAR
MAREA Weekend (185)	FDR329211	203,3	61	59	4+2+1	N	REAR
MULTIPLA (186)	FDR329006	228,3	61,1	59	4+2+1	N	REAR
PALIO (178BX)	FDR329006	228,3	61,1	59	4+2+1	N	REAR
PALIO Weekend (178DX)	FDR329006	228,3	61,1	59	4+2+1	N	REAR
PANDA (141A_)	FDR329000	185,4	53,3	59	4+2	N	REAR
PANDA (169)	FDR329211	203,3	61	59	4+2+1	N	REAR
PANDA (169) / for vehicles with ABS	FDR329005	180	53,8	59	4+2+1	N	REAR
PANDA Van (141_)	FDR329000	185,4	53,3	59	4+2	N	REAR
PANDA Van (169)	FDR329005	180	53,8	59	4+2+1	N	REAR
PANDA Van (169)	FDR329211	203,3	61	59	4+2+1	N	REAR
PENNY VAN (257)	FDR329000	185,4	53,3	59	4+2	N	REAR
PUNTO (176)	FDR329005	180	53,8	59	4+2+1	N	REAR
PUNTO (188)	FDR329211	203,3	61	59	4+2+1	N	REAR
PUNTO (188) / for vehicles with ABS	FDR329005	180	53,8	59	4+2+1	N	REAR
PUNTO Convertible (176C)	FDR329005	180	53,8	59	4+2+1	N	REAR
PUNTO Van (176L)	FDR329005	180	53,8	59	4+2+1	N	REAR
PUNTO Van (188AX) / for vehicles with ABS	FDR329005	180	53,8	59	4+2+1	N	REAR
QUBO (225)	FDR329211	203,3	61	59	4+2+1	N	REAR
REGATA (138)	FDR329000	185,4	53,3	59	4+2	N	REAR
REGATA Weekend (138)	FDR329000	185,4	53,3	59	4+2	N	REAR
RITMO Convertible (138_)	FDR329000	185,4	53,3	59	4+2	N	REAR
RITMO I (138A)	FDR329000	185,4	53,3	59	4+2	N	REAR
RITMO II (138A)	FDR329000	185,4	53,3	59	4+2	N	REAR
SCUDO Box (220L)	FDR329012	255	85	59	5+1	N	REAR
SCUDO Combinato (220P)	FDR329012	255	85	59	5+1	N	REAR
SIENA (178_)	FDR329006	228,3	61,1	59	4+2+1	N	REAR
STRADA Pickup (178E)	FDR329006	228,3	61,1	59	4+2+1	N	REAR
TALENTO Box (290)	FDR329008	254,3	98	72	5+3+2	N	REAR
TALENTO Bus (290)	FDR329008	254,3	98	72	5+3+2	N	REAR
TALENTO Platform/Chassis (290)	FDR329008	254,3	98	72	5+3+2	N	REAR
TEMPRA (159)	FDR329005	180	53,8	59	4+2+1	N	REAR
TEMPRA (159)	FDR329006	228,3	61,1	59	4+2+1	N	REAR
TEMPRA (159) / for vehicles without ABS	FDR329005	180	53,8	59	4+2+1	N	REAR
TEMPRA S.W. (159)	FDR329006	228,3	61,1	59	4+2+1	N	REAR
TEMPRA S.W. (159)	FDR329005	180	53,8	59	4+2+1	N	REAR
TIPO (160)	FDR329005	180	53,8	59	4+2+1	N	REAR
TIPO (160) / for vehicles without ABS	FDR329006	228,3	61,1	59	4+2+1	N	REAR
ULYSSE (220)	FDR329012	255	85	59	5+1	N	REAR
ULYSSE (220) / for vehicles without ABS	FDR329012	255	85	59	5+1	N	REAR
UNO (146A/E)	FDR329000	185,4	53,3	59	4+2	N	REAR
UNO (146A/E) / for vehicles without ABS	FDR329005	180	53,8	59	4+2+1	N	REAR
UNO (146A/E) / for vehicles without ABS	FDR329006	228,3	61,1	59	4+2+1	N	REAR
FORD							
ESCORT '86 Express (AVF)	FDR329710	180,2	76,2	50,215	4	N	REAR
ESCORT CLASSIC (AAL, ABL) / for vehicles with ABS	FDR329197	180	87,9	50.215/50.215	4	N	REAR
ESCORT CLASSIC (AAL, ABL) / for vehicles without ABS	FDR329184	180,1	87,9	50.215/50.215	4	N	REAR
ESCORT CLASSIC Turnier (ANL) / for vehicles with ABS	FDR329197	180	87,9	50.215/50.215	4	N	REAR
ESCORT CLASSIC Turnier (ANL) / for vehicles without ABS	FDR329184	180,1	87,9	50.215/50.215	4	N	REAR



APPLICATION	FERODO PARTNO	DIAMETER Ø [MM]	HEIGHT [MM]	BORE [MM]	FIXING HOLES NO.	BEARING	FITTING AXLE
ESCORT III (GAA)	FDR329710	180,2	76,2	50,215	4	N	REAR
ESCORT III Convertible (ALD)	FDR329710	180,2	76,2	50,215	4	N	REAR
ESCORT III Estate (AWA)	FDR329710	180,2	76,2	50,215	4	N	REAR
ESCORT IV (GAF, AWF, ABFT)	FDR329710	180,2	76,2	50,215	4	N	REAR
ESCORT IV Convertible (ALF)	FDR329710	180,2	76,2	50,215	4	N	REAR
ESCORT IV Estate (AWF, AVF)	FDR329710	180,2	76,2	50,215	4	N	REAR
ESCORT V (GAL) / for vehicles without ABS	FDR329184	180,1	87,9	50,215/50.215	4	N	REAR
ESCORT V Convertible (ALL) / for vehicles without ABS	FDR329184	180,1	87,9	50,215/50.215	4	N	REAR
ESCORT V Estate (GAL, AVL) / for vehicles without ABS	FDR329184	180,1	87,9	50,215/50.215	4	N	REAR
Escort V/VI/VII	FDR329725	180	76	50,215	4	Y	REAR
ESCORT VI (GAL) / for vehicles without ABS	FDR329184	180,1	87,9	50,215/50.215	4	N	REAR
ESCORT VI Convertible (ALL) / for vehicles without ABS	FDR329184	180,1	87,9	50,215/50.215	4	N	REAR
ESCORT VI Estate (GAL) / for vehicles without ABS	FDR329184	180,1	87,9	50,215/50.215	4	N	REAR
ESCORT VI Saloon (GAL) / for vehicles without ABS	FDR329184	180,1	87,9	50,215/50.215	4	N	REAR
ESCORT VII (GAL, AAL, ABL) / for vehicles with ABS	FDR329197	180	87,9	50,215/50.215	4	N	REAR
ESCORT VII (GAL, AAL, ABL) / for vehicles without ABS	FDR329184	180,1	87,9	50,215/50.215	4	N	REAR
ESCORT VII Convertible (ALL) / for vehicles with ABS	FDR329197	180	87,9	50,215/50.215	4	N	REAR
ESCORT VII Convertible (ALL) / for vehicles without ABS	FDR329184	180,1	87,9	50,215/50.215	4	N	REAR
ESCORT VII Estate (GAL, ANL) / for vehicles with ABS	FDR329197	180	87,9	50,215/50.215	4	N	REAR
ESCORT VII Estate (GAL, ANL) / for vehicles without ABS	FDR329184	180,1	87,9	50,215/50.215	4	N	REAR
ESCORT VII Saloon (GAL, AFL) / for vehicles with ABS	FDR329197	180	87,9	50,215/50.215	4	N	REAR
ESCORT VII Saloon (GAL, AFL) / for vehicles without ABS	FDR329184	180,1	87,9	50,215/50.215	4	N	REAR
FIESTA Box (F3L, F5L) / for vehicles without ABS	FDR329184	180,1	87,9	50,215/50.215	4	N	REAR
FIESTA Box (FVD) / for vehicles without ABS	FDR329184	180,1	87,9	50,215/50.215	4	N	REAR
FIESTA Box (J5_, J3_) / for vehicles with ABS	FDR329197	180	87,9	50,215/50.215	4	N	REAR
FIESTA Box (J5_, J3_) / for vehicles without ABS	FDR329184	180,1	87,9	50,215/50.215	4	N	REAR
FIESTA Box (JV_) / for vehicles with ABS	FDR329197	180	87,9	50,215/50.215	4	N	REAR
FIESTA Box (JV_) / for vehicles without ABS	FDR329184	180,1	87,9	50,215/50.215	4	N	REAR
FIESTA III (GFJ) / for vehicles with ABS	FDR329197	180	87,9	50,215/50.215	4	N	REAR
FIESTA III (GFJ) / for vehicles without ABS	FDR329184	180,1	87,9	50,215/50.215	4	N	REAR
FIESTA IV (JA_, JB_)	FDR329715	180	76	50,215	4	Y	REAR
FIESTA IV (JA_, JB_)	FDR329197	180	87,9	50,215/50.215	4	N	REAR
FIESTA IV (JA_, JB_) / for vehicles with ABS	FDR329197	180	87,9	50,215/50.215	4	N	REAR
FIESTA IV (JA_, JB_) / for vehicles without ABS	FDR329184	180,1	87,9	50,215/50.215	4	N	REAR
FOCUS (DAW, DBW)	FDR329714	203,2	95	52,898	4	Y	REAR
FOCUS Estate (DNW)	FDR329714	203,2	95	52,898	4	Y	REAR
FOCUS Saloon (DFW)	FDR329714	203,2	95	52,898	4	Y	REAR
KA (RB_)	FDR329715	180	76	50,215	4	Y	REAR
KA (RB_) / for vehicles with ABS	FDR329197	180	87,9	50,215/50.215	4	N	REAR
KA (RB_) / for vehicles without ABS	FDR329184	180,1	87,9	50,215/50.215	4	N	REAR
MONDEO I (GBP)	FDR329198	203,2	63,2	63,5	4	N	REAR
MONDEO I (GBP)	FDR329191	228,6	66,4	63,6	4	N	REAR
MONDEO I (GBP) / for vehicles without ABS	FDR329191	228,6	66,4	63,6	4	N	REAR
MONDEO I Estate (BNP)	FDR329198	203,2	63,2	63,5	4	N	REAR
MONDEO I Estate (BNP) / for vehicles without ABS	FDR329191	228,6	66,4	63,6	4	N	REAR
MONDEO I Saloon (GBP)	FDR329198	203,2	63,2	63,5	4	N	REAR
MONDEO I Saloon (GBP) / for vehicles without ABS	FDR329191	228,6	66,4	63,6	4	N	REAR
MONDEO II (BAP)	FDR329198	203,2	63,2	63,5	4	N	REAR
MONDEO II (BAP) / for vehicles without ABS	FDR329191	228,6	66,4	63,6	4	N	REAR
MONDEO II Estate (BNP)	FDR329198	203,2	63,2	63,5	4	N	REAR
MONDEO II Estate (BNP) / for vehicles without ABS	FDR329191	228,6	66,4	63,6	4	N	REAR
MONDEO II Saloon (BFP)	FDR329198	203,2	63,2	63,5	4	N	REAR
MONDEO II Saloon (BFP) / for vehicles without ABS	FDR329191	228,6	66,4	63,6	4	N	REAR
ORION I (AFD)	FDR329710	180,2	76,2	50,215	4	N	REAR
ORION II (AFF) / for vehicles with ABS	FDR329710	180,2	76,2	50,215	4	N	REAR
ORION III (GAL) / for vehicles without ABS	FDR329184	180,1	87,9	50,215/50.215	4	N	REAR
PUMA (EC_) / for vehicles with ABS	FDR329197	180	87,9	50,215/50.215	4	N	REAR
PUMA (EC_) / for vehicles without ABS	FDR329184	180,1	87,9	50,215/50.215	4	N	REAR
TRANSIT Box (E_)	FDR329192	254	96	132	5	N	REAR



APPLICATION	FERODO PARTNO	DIAMETER Ø [MM]	HEIGHT [MM]	BORE [MM]	FIXING HOLES NO.	BEARING	FITTING AXLE
TRANSIT Box (E_)	FDR329193	280	131,9	142	6	N	REAR
TRANSIT Box (FA_)	FDR329258	254	95,8	132	5	N	REAR
TRANSIT Box (FA_)	FDR329252	280	132,5	142,1	6	N	REAR
TRANSIT Box (T_)	FDR329187	228,6	84	115	5	N	REAR
TRANSIT Box (T_)	FDR329192	254	96	132	5	N	REAR
TRANSIT Box (T_)	FDR329193	280	131,9	142	6	N	REAR
TRANSIT Box (V_)	FDR329187	228,6	84	115	5	N	REAR
TRANSIT Box / for vehicles without ABS	FDR329258	254	95,8	132	5	N	REAR
TRANSIT Bus (E_)	FDR329192	254	96	132	5	N	REAR
TRANSIT Bus (E_)	FDR329193	280	131,9	142	6	N	REAR
TRANSIT Bus (FD_ , FB_ , FS_ , FZ_ , FC_)	FDR329258	254	95,8	132	5	N	REAR
TRANSIT Bus (FD_ , FB_ , FS_ , FZ_ , FC_)	FDR329252	280	132,5	142,1	6	N	REAR
TRANSIT Bus (T_)	FDR329187	228,6	84	115	5	N	REAR
TRANSIT Bus (T_)	FDR329192	254	96	132	5	N	REAR
TRANSIT Bus (T_)	FDR329193	280	131,9	142	6	N	REAR
TRANSIT Bus (V_)	FDR329187	228,6	84	115	5	N	REAR
TRANSIT Bus / for vehicles without ABS	FDR329258	254	95,8	132	5	N	REAR
TRANSIT Platform/Chassis (E_)	FDR329192	254	96	132	5	N	REAR
TRANSIT Platform/Chassis (E_)	FDR329193	280	131,9	142	6	N	REAR
TRANSIT Platform/Chassis (FM_ , FN_)	FDR329258	254	95,8	132	5	N	REAR
TRANSIT Platform/Chassis (FM_ , FN_)	FDR329252	280	132,5	142,1	6	N	REAR
TRANSIT Platform/Chassis (T_)	FDR329187	228,6	84	115	5	N	REAR
TRANSIT Platform/Chassis (T_)	FDR329192	254	96	132	5	N	REAR
TRANSIT Platform/Chassis (T_)	FDR329193	280	131,9	142	6	N	REAR
TRANSIT Platform/Chassis (V_)	FDR329187	228,6	84	115	5	N	REAR
TRANSIT Platform/Chassis / for vehicles without ABS	FDR329258	254	95,8	132	5	N	REAR
TRANSIT TOURNEO	FDR329193	280	131,9	142	6	N	REAR
TRANSIT TOURNEO	FDR329258	254	95,8	132	5	N	REAR
TRANSIT TOURNEO	FDR329192	254	96	132	5	N	REAR
GEO							
TRACKER Station Wagon	FDR329310	254	65,8	100,1	5	N	REAR
HONDA							
ACCORD III (CA) / for vehicles without ABS	FDR329061	200	59,34	61,14	4+2	N	REAR
ACCORD III (CA4, CA5) / for vehicles without ABS	FDR329061	200	59,34	61,14	4+2	N	REAR
ACCORD III Aerodeck (CA) / for vehicles without ABS	FDR329061	200	59,34	61,14	4+2	N	REAR
CITY Saloon	FDR329287	180	56	61	4+2	N	REAR
CIVIC III Hatchback (AL, AJ, AG, AH)	FDR329060	180	61,5	61	4+2	N	REAR
CIVIC III Saloon (AM, AK, AU)	FDR329060	180	61,5	61	4+2	N	REAR
CIVIC IV Hatchback (EC, ED, EE)	FDR329060	180	61,5	61	4+2	N	REAR
CIVIC IV Saloon (ED)	FDR329060	180	61,5	61	4+2	N	REAR
CIVIC V Coupe (EJ)	FDR329061	200	59,34	61,14	4+2	N	REAR
CIVIC V Hatchback (EG)	FDR329060	180	61,5	61	4+2	N	REAR
CIVIC V Hatchback (EG) / for vehicles without ABS	FDR329061	200	59,34	61,14	4+2	N	REAR
CIVIC V Saloon (EG, EH)	FDR329060	180	61,5	61	4+2	N	REAR
CIVIC V Saloon (EG, EH) / for vehicles without ABS	FDR329061	200	59,34	61,14	4+2	N	REAR
CIVIC VI Coupe (EJ, EM1) / for vehicles without ABS	FDR329061	200	59,34	61,14	4+2	N	REAR
CIVIC VI Fastback (MA, MB) / for vehicles without ABS	FDR329061	200	59,34	61,14	4+2	N	REAR
CIVIC VI Hatchback (EJ, EK) / for vehicles without ABS	FDR329061	200	59,34	61,14	4+2	N	REAR
CIVIC VI Saloon (EJ, EK) / for vehicles without ABS	FDR329061	200	59,34	61,14	4+2	N	REAR
CRX I (AF, AS)	FDR329060	180	61,5	61	4+2	N	REAR
CRX III (EH, EG)	FDR329060	180	61,5	61	4+2	N	REAR
JAZZ II (GD)	FDR329287	180	56	61	4+2	N	REAR
JAZZ Saloon	FDR329287	180	56	61	4+2	N	REAR
LOGO (GA3)	FDR329061	200	59,34	61,14	4+2	N	REAR



APPLICATION	FERODO PARTNO	DIAMETER Ø [MM]	HEIGHT [MM]	BORE [MM]	FIXING HOLES NO.	BEARING	FITTING AXLE
HYUNDAI							
ACCENT I (X-3)	FDR329319	180	58,6	76	4+2	N	REAR
ACCENT I (X-3)	FDR329321	180	58,5	90	4+2	N	REAR
ACCENT II (LC)	FDR329319	180	58,6	76	4+2	N	REAR
ACCENT II Saloon (LC)	FDR329319	180	58,6	76	4+2	N	REAR
ACCENT Saloon (LC)	FDR329319	180	58,6	76	4+2	N	REAR
ACCENT Saloon (X-3)	FDR329319	180	58,6	76	4+2	N	REAR
ACCENT Saloon (X-3)	FDR329321	180	58,5	90	4+2	N	REAR
ATOS (MX)	FDR329280	180	88,7	39.801/50.215	4	N	REAR
ATOS PRIME (MX)	FDR329280	180	88,7	39.801/50.215	4	N	REAR
COUPE (RD)	FDR329274	203,2	61	76	4+2	N	REAR
ELANTRA (XD)	FDR329274	203,2	61	76	4+2	N	REAR
ELANTRA Saloon (HD) / for vehicles without ABS	FDR329280	180	88,7	39.801/50.215	4	N	REAR
ELANTRA Saloon (XD)	FDR329274	203,2	61	76	4+2	N	REAR
ELANTRA Saloon (XD) / for vehicles without ABS	FDR329280	180	88,7	39.801/50.215	4	N	REAR
H-1 / STAREX	FDR329334	270	90	75	5+2	N	REAR
H-1 Box	FDR329334	270	90	75	5+2	N	REAR
H-1 Platform/Chassis	FDR329334	270	90	75	5+2	N	REAR
LANTRA II (J-2)	FDR329274	203,2	61	76	4+2	N	REAR
LANTRA II Wagon (J-2)	FDR329274	203,2	61	76	4+2	N	REAR
MATRIX (FC)	FDR329274	203,2	61	76	4+2	N	REAR
PONY (X-2)	FDR329320	180,3	71,3	51.916/51.916	4	N	REAR
PONY (X-2)	FDR329321	180	58,5	90	4+2	N	REAR
PONY / EXCEL Saloon (X-2)	FDR329320	180,3	71,3	51.916/51.916	4	N	REAR
PONY / EXCEL Saloon (X-2)	FDR329321	180	58,5	90	4+2	N	REAR
S COUPE (SLC)	FDR329320	180,3	71,3	51.916/51.916	4	N	REAR
ISUZU							
CAMPO (KB)	FDR329006	228,3	61,1	59	4+2+1	N	REAR
MIDI Box (98000N)	FDR329006	228,3	61,1	59	4+2+1	N	REAR
MIDI Bus (94000, 98000)	FDR329006	228,3	61,1	59	4+2+1	N	REAR
MIDI Van (94000, 98000)	FDR329006	228,3	61,1	59	4+2+1	N	REAR
TROOPER (UBS)	FDR329006	228,3	61,1	59	4+2+1	N	REAR
TROOPER Open Off-Road Vehicle (UBS)	FDR329006	228,3	61,1	59	4+2+1	N	REAR
IVECO							
DAILY I Box Body / Estate	FDR329009	254	122,5	129,8	6+1	N	REAR
DAILY I Platform/Chassis	FDR329009	254	122,5	129,8	6+1	N	REAR
DAILY II Box Body / Estate	FDR329009	254	122,5	129,8	6+1	N	REAR
DAILY II Platform/Chassis	FDR329009	254	122,5	129,8	6+1	N	REAR
JEEP							
CHEROKEE (XJ)	FDR329340	228,6	91,55	72,1	5	N	REAR
CHEROKEE (XJ)	FDR329341*	253,8	109,9	72,2	5+3	N	REAR
COMANCHE (MJ)	FDR329340	228,6	91,55	72,1	5	N	REAR
WRANGLER I (YJ, SJ_)	FDR329340	228,6	91,55	72,1	5	N	REAR
WRANGLER I (YJ, SJ_)	FDR329341*	253,8	109,9	72,2	5+3	N	REAR
WRANGLER II (TJ)	FDR329340	228,6	91,55	72,1	5	N	REAR
WRANGLER II (TJ)	FDR329341*	253,8	109,9	72,2	5+3	N	REAR
KIA							
BESTA Box	FDR329345	260,1	76,4	93	6+2+2	N	REAR
CARNIVAL I (UP)	FDR329351	250	104,5	71	5+2+2	N	REAR
CARNIVAL II (GQ)	FDR329351	250	104,5	71	5+2+2	N	REAR
PREGIO Box (TB)	FDR329345	260,1	76,4	93	6+2+2	N	REAR
PREGIO Bus	FDR329345	260,1	76,4	93	6+2+2	N	REAR
PRIDE (DA)	FDR329182	170	70,1	39.801/50.215	4	N	REAR



APPLICATION	FERODO PARTNO	DIAMETER Ø [MM]	HEIGHT [MM]	BORE [MM]	FIXING HOLES NO.	BEARING	FITTING AXLE
PRIDE Estate	FDR329182	170	70,1	39.801/50.215	4	N	REAR
SEPHIA (FA)	FDR329336	200	58,5	57,1	4+2+2	N	REAR
SEPHIA Saloon (FA)	FDR329336	200	58,5	57,1	4+2+2	N	REAR
SHUMA (FB)	FDR329336	200	58,5	57,1	4+2+2	N	REAR
SHUMA II (FB)	FDR329336	200	58,5	57,1	4+2+2	N	REAR
SHUMA II Saloon (FB)	FDR329336	200	58,5	57,1	4+2+2	N	REAR
SHUMA Saloon (FB)	FDR329336	200	58,5	57,1	4+2+2	N	REAR
SOUL (AM)	FDR329280	180	88,7	39.801/50.215	4	N	REAR
SPORTAGE (K00)	FDR329337	250	90,2	43,1	5+4+4	N	REAR

LANCIA

A 112	FDR329000	185,4	53,3	59	4+2	N	REAR
DEDRA (835)	FDR329005	180	53,8	59	4+2+1	N	REAR
DEDRA SW (835)	FDR329005	180	53,8	59	4+2+1	N	REAR
DELTA I (831AB0)	FDR329000	185,4	53,3	59	4+2	N	REAR
DELTA II (836)	FDR329005	180	53,8	59	4+2+1	N	REAR
DELTA II (836)	FDR329211	203,3	61	59	4+2+1	N	REAR
MUSA (350)	FDR329006	228,3	61,1	59	4+2+1	N	REAR
MUSA (350)	FDR329211	203,3	61	59	4+2+1	N	REAR
PRISMA (831AB0)	FDR329000	185,4	53,3	59	4+2	N	REAR
Y (840A)	FDR329211	203,3	61	59	4+2+1	N	REAR
Y (840A) / for vehicles with ABS	FDR329005	180	53,8	59	4+2+1	N	REAR
Y10 (156)	FDR329000	185,4	53,3	59	4+2	N	REAR
Y10 (156)	FDR329005	180	53,8	59	4+2+1	N	REAR
YPSILON (843) / for vehicles without ABS	FDR329211	203,3	61	59	4+2+1	N	REAR
ZETA (220)	FDR329012	255	85	59	5+1	N	REAR

LAND ROVER

FREELANDER (LN)	FDR329267	254	56,3	66,2	5+2	N	REAR
FREELANDER (LN)	FDR329268	254,1	75,5	66,2	5+2	N	REAR
FREELANDER Soft Top (LN_)	FDR329267	254	56,3	66,2	5+2	N	REAR

MAZDA

121 I (DA)	FDR329182	170	70,1	39.801/50.215	4	N	REAR
121 III (JASM, JBSM) / for vehicles without ABS	FDR329184	180,1	87,9	50.215/50.215	4	N	REAR
323 C IV (BG)	FDR329322	200	57,8	55	4+2+2	N	REAR
323 C V (BA)	FDR329322	200	57,8	55	4+2+2	N	REAR
323 F IV (BG)	FDR329322	200	57,8	55	4+2+2	N	REAR
323 F V (BA)	FDR329322	200	57,8	55	4+2+2	N	REAR
323 F VI (BJ)	FDR329322	200	57,8	55	4+2+2	N	REAR
323 P V (BA)	FDR329322	200	57,8	55	4+2+2	N	REAR
323 S IV (BG)	FDR329322	200	57,8	55	4+2+2	N	REAR
323 S V (BA)	FDR329322	200	57,8	55	4+2+2	N	REAR
323 S VI (BJ)	FDR329322	200	57,8	55	4+2+2	N	REAR
B-SERIE (UD)	FDR329345	260,1	76,4	93	6+2+2	N	REAR
B-SERIE (UF)	FDR329345	260,1	76,4	93	6+2+2	N	REAR
DEMIO (DW)	FDR329322	200	57,8	55	4+2+2	N	REAR
E-SERIE Box (SR2)	FDR329345	260,1	76,4	93	6+2+2	N	REAR
E-SERIE Platform/Chassis (SD1)	FDR329345	260,1	76,4	93	6+2+2	N	REAR
E-SERIE Platform/Chassis (SD1, SL)	FDR329345	260,1	76,4	93	6+2+2	N	REAR
MPV I (LV)	FDR329323*	260	76,1	72,1	5+2+1	N	REAR
MX-3 (EC)	FDR329322	200	57,8	55	4+2+2	N	REAR

MERCEDES-BENZ

A-CLASS (W168)	FDR329240	180	57,5	67	5+1	N	REAR
T1 Box (601)	FDR329141	230	73	85	5+1	N	REAR



APPLICATION	FERODO PARTNO	DIAMETER Ø [MM]	HEIGHT [MM]	BORE [MM]	FIXING HOLES NO.	BEARING	FITTING AXLE
T1 Bus (601)	FDR329141	230	73	85	5+1	N	REAR
T1 Platform/Chassis (601)	FDR329141	230	73	85	5+1	N	REAR
MITSUBISHI							
CARISMA (DA_)	FDR329275	203	64,1	90	4+2	N	REAR
CARISMA Saloon (DA_)	FDR329275	203	64,1	90	4+2	N	REAR
CELESTE (A7_)	FDR329303	228,6	61,5	89,8	5+2	N	REAR
COLT IV (CA_A)	FDR329281	180	65,6	64	4+2	N	REAR
COLT V (CJ_, CP_)	FDR329281	180	65,6	64	4+2	N	REAR
GALANT I Station Wagon (A12_V)	FDR329303	228,6	61,5	89,8	5+2	N	REAR
GALANT II (A16_)	FDR329303	228,6	61,5	89,8	5+2	N	REAR
GALANT II Station Wagon (A16_V)	FDR329303	228,6	61,5	89,8	5+2	N	REAR
LANCER I (A17_)	FDR329303	228,6	61,5	89,8	5+2	N	REAR
LANCER V (CB/D_A)	FDR329281	180	65,6	64	4+2	N	REAR
LANCER V Station Wagon (CB_W, CD_W)	FDR329303	228,6	61,5	89,8	5+2	N	REAR
LANCER VI (CJ-CP_)	FDR329281	180	65,6	64	4+2	N	REAR
MIRAGE Coupe	FDR329281	180	65,6	64	4+2	N	REAR
MIRAGE Hatchback (CJ_A, CL_A)	FDR329281	180	65,6	64	4+2	N	REAR
MIRAGE Saloon	FDR329281	180	65,6	64	4+2	N	REAR
SAPPORO I (A12_)	FDR329303	228,6	61,5	89,8	5+2	N	REAR
SAPPORO II (A16_A)	FDR329303	228,6	61,5	89,8	5+2	N	REAR
SPACE RUNNER (N1_W, N2_W)	FDR329303	228,6	61,5	89,8	5+2	N	REAR
SPACE STAR (DG_A)	FDR329275	203	64,1	90	4+2	N	REAR
SPACE WAGON (DO_V/W)	FDR329303	228,6	61,5	89,8	5+2	N	REAR
SPACE WAGON (N3_W, N4_W)	FDR329303	228,6	61,5	89,8	5+2	N	REAR
NISSAN							
ALMERA II (N16)	FDR329266	203	66,7	68	4+2	N	REAR
ALMERA II Hatchback (N16)	FDR329266	203	66,7	68	4+2	N	REAR
KUBISTAR (X76)	FDR329219	203,2	76	54,93	4	N	REAR
KUBISTAR Box (X80)	FDR329219	203,2	76	54,93	4	N	REAR
MICRA II (K11)	FDR329216	180	53,1	61	4	N	REAR
PATHFINDER II (R50)	FDR329306	295	88,2	100,5	6+1+2	N	REAR
PICK UP (D22)	FDR329306	295	88,2	100,5	6+1+2	N	REAR
PICK UP II (D21)	FDR329306	295	88,2	100,5	6+1+2	N	REAR
PICK UP III (D22)	FDR329306	295	88,2	100,5	6+1+2	N	REAR
OPEL							
ADMIRAL A	FDR329204	230	75,8	57	4+1	N	REAR
AGILA (A) (H00)	FDR329251	180	63	51,916	4	N	REAR
ASCONA A (81_, 86_, 87_, 88_)	FDR329202	200	66,5	57	4+1	N	REAR
ASCONA A (81_, 86_, 87_, 88_)	FDR329204	230	75,8	57	4+1	N	REAR
ASCONA A Voyage (84_, 89_)	FDR329202	200	66,5	57	4+1	N	REAR
ASCONA A Voyage (84_, 89_)	FDR329204	230	75,8	57	4+1	N	REAR
ASCONA B (81_, 86_, 87_, 88_)	FDR329202	200	66,5	57	4+1	N	REAR
ASCONA B (81_, 86_, 87_, 88_)	FDR329204	230	75,8	57	4+1	N	REAR
ASCONA C (81_, 86_, 87_, 88_)	FDR329202	200	66,5	57	4+1	N	REAR
ASCONA C Hatchback (84_, 89_)	FDR329202	200	66,5	57	4+1	N	REAR
ASTRA F (56_, 57_)	FDR329201	200	56,5	57	4+1	N	REAR
ASTRA F (56_, 57_)	FDR329202	200	66,5	57	4+1	N	REAR
ASTRA F (56_, 57_)	FDR329238	230,1	66,4	57	4+1	N	REAR
ASTRA F CLASSIC Estate	FDR329202	200	66,5	57	4+1	N	REAR
ASTRA F CLASSIC Estate	FDR329238	230,1	66,4	57	4+1	N	REAR
ASTRA F CLASSIC Hatchback	FDR329201	200	56,5	57	4+1	N	REAR
ASTRA F CLASSIC Hatchback	FDR329202	200	66,5	57	4+1	N	REAR
ASTRA F CLASSIC Saloon	FDR329201	200	56,5	57	4+1	N	REAR



APPLICATION	FERODO PARTNO	DIAMETER Ø [MM]	HEIGHT [MM]	BORE [MM]	FIXING HOLES NO.	BEARING	FITTING AXLE
ASTRA F CLASSIC Saloon	FDR329202	200	66,5	57	4+1	N	REAR
ASTRA F Convertible (53_B)	FDR329201	200	56,5	57	4+1	N	REAR
ASTRA F Convertible (53_B)	FDR329202	200	66,5	57	4+1	N	REAR
ASTRA F Estate (51_, 52_)	FDR329202	200	66,5	57	4+1	N	REAR
ASTRA F Estate (51_, 52_)	FDR329238	230,1	66,4	57	4+1	N	REAR
ASTRA F Estate (51_, 52_)	FDR329201	200	56,5	57	4+1	N	REAR
ASTRA F Hatchback (53_, 54_, 58_, 59_)	FDR329201	200	56,5	57	4+1	N	REAR
ASTRA F Hatchback (53_, 54_, 58_, 59_)	FDR329202	200	66,5	57	4+1	N	REAR
ASTRA F Hatchback (53_, 54_, 58_, 59_)	FDR329238	230,1	66,4	57	4+1	N	REAR
ASTRA F Van (55_)	FDR329202	200	66,5	57	4+1	N	REAR
ASTRA F Van (55_)	FDR329238	230,1	66,4	57	4+1	N	REAR
ASTRA G Box (F70)	FDR329238	230,1	66,4	57	4+1	N	REAR
ASTRA G Convertible (F67)	FDR329238	230,1	66,4	57	4+1	N	REAR
ASTRA G Coupe (F07_)	FDR329238	230,1	66,4	57	4+1	N	REAR
ASTRA G Estate (F35_)	FDR329202	200	66,5	57	4+1	N	REAR
ASTRA G Estate (F35_)	FDR329238	230,1	66,4	57	4+1	N	REAR
ASTRA G Hatchback (F48_, F08_)	FDR329202	200	66,5	57	4+1	N	REAR
ASTRA G Hatchback (F48_, F08_)	FDR329238	230,1	66,4	57	4+1	N	REAR
ASTRA G Hatchback (F48_, F08_)	FDR329219	203,2	76	54,93	4	N	REAR
ASTRA G Saloon (F69_)	FDR329202	200	66,5	57	4+1	N	REAR
ASTRA G Saloon (F69_)	FDR329238	230,1	66,4	57	4+1	N	REAR
CAMPO (TF_)	FDR329006	228,3	61,1	59	4+2+1	N	REAR
COMBO (71_)	FDR329204	230	75,8	57	4+1	N	REAR
COMBO (71_)	FDR329202	200	66,5	57	4+1	N	REAR
COMBO (71_)	FDR329238	230,1	66,4	57	4+1	N	REAR
COMBO (71_) / for vehicles with ABS	FDR329203	200	84,3	39.801/50.19	4	N	REAR
COMBO Box Body / Estate	FDR329238	230,1	66,4	57	4+1	N	REAR
COMBO Box Body / Estate / for vehicles without ABS	FDR329238	230,1	66,4	57	4+1	N	REAR
COMBO Tour	FDR329238	230,1	66,4	57	4+1	N	REAR
COMBO Tour / for vehicles without ABS	FDR329238	230,1	66,4	57	4+1	N	REAR
COMMODORE A	FDR329204	230	75,8	57	4+1	N	REAR
COMMODORE A Coupe	FDR329204	230	75,8	57	4+1	N	REAR
Corsa A Hatchback	FDR329711	200,4	83,6	50,215	4	N	REAR
CORSA A Hatchback (93_, 94_, 98_, 99_)	FDR329203	200	84,3	39.801/50.19	4	N	REAR
CORSA B (73_, 78_, 79_) / for vehicles with ABS	FDR329203	200	84,3	39.801/50.19	4	N	REAR
CORSA B Box (73_) / for vehicles with ABS	FDR329203	200	84,3	39.801/50.19	4	N	REAR
CORSA B Box (73_) / for vehicles with ABS	FDR329204	230	75,8	57	4+1	N	REAR
CORSA B Estate (F35) / for vehicles with ABS	FDR329203	200	84,3	39.801/50.19	4	N	REAR
CORSA C (F08, F68) / for vehicles with ABS	FDR329259	200	94,1	52,898	4	N	REAR
CORSA C (F08, F68) / for vehicles without ABS	FDR329713	200,2	85,8	52,9	4	Y	REAR
CORSA C Box (F08, W5L) / for vehicles with ABS	FDR329259	200	94,1	52,898	4	N	REAR
CORSA C Box (F08, W5L) / for vehicles without ABS	FDR329713	200,2	85,8	52,9	4	Y	REAR
DIPLOMAT A	FDR329204	230	75,8	57	4+1	N	REAR
DIPLOMAT A Coupe	FDR329204	230	75,8	57	4+1	N	REAR
GT	FDR329201	200	56,5	57	4+1	N	REAR
GT	FDR329204	230	75,8	57	4+1	N	REAR
KADETT B	FDR329202	200	66,5	57	4+1	N	REAR
KADETT B	FDR329204	230	75,8	57	4+1	N	REAR
KADETT B Coupe	FDR329202	200	66,5	57	4+1	N	REAR
KADETT B Coupe	FDR329204	230	75,8	57	4+1	N	REAR
KADETT B Estate	FDR329202	200	66,5	57	4+1	N	REAR
KADETT B Estate	FDR329204	230	75,8	57	4+1	N	REAR
KADETT C	FDR329202	200	66,5	57	4+1	N	REAR
KADETT C	FDR329204	230	75,8	57	4+1	N	REAR
KADETT C City	FDR329202	200	66,5	57	4+1	N	REAR
KADETT C City	FDR329204	230	75,8	57	4+1	N	REAR
KADETT C Coupe	FDR329202	200	66,5	57	4+1	N	REAR
KADETT C Coupe	FDR329204	230	75,8	57	4+1	N	REAR



APPLICATION	FERODO PARTNO	DIAMETER Ø [MM]	HEIGHT [MM]	BORE [MM]	FIXING HOLES NO.	BEARING	FITTING AXLE
KADETT C Estate	FDR329202	200	66,5	57	4+1	N	REAR
KADETT C Estate	FDR329204	230	75,8	57	4+1	N	REAR
KADETT D (31_-34_, 41_-44_)	FDR329201	200	56,5	57	4+1	N	REAR
KADETT D (31_-34_, 41_-44_)	FDR329202	200	66,5	57	4+1	N	REAR
KADETT D (32_, 37_, 39_, 42)	FDR329201	200	56,5	57	4+1	N	REAR
KADETT D (32_, 37_, 39_, 42)	FDR329202	200	66,5	57	4+1	N	REAR
KADETT D Estate (35_, 36_, 45_, 46_)	FDR329201	200	56,5	57	4+1	N	REAR
KADETT D Estate (35_, 36_, 45_, 46_)	FDR329202	200	66,5	57	4+1	N	REAR
KADETT D Estate (35_, 36_, 45_, 46_)	FDR329204	230	75,8	57	4+1	N	REAR
KADETT E (39_, 49_)	FDR329201	200	56,5	57	4+1	N	REAR
KADETT E (39_, 49_)	FDR329202	200	66,5	57	4+1	N	REAR
KADETT E (39_, 49_)	FDR329204	230	75,8	57	4+1	N	REAR
KADETT E Box (37_, 47_)	FDR329202	200	66,5	57	4+1	N	REAR
KADETT E Box (37_, 47_)	FDR329201	200	56,5	57	4+1	N	REAR
KADETT E Combo (38_, 48_)	FDR329201	200	56,5	57	4+1	N	REAR
KADETT E Combo (38_, 48_)	FDR329202	200	66,5	57	4+1	N	REAR
KADETT E Convertible (43B_)	FDR329202	200	66,5	57	4+1	N	REAR
KADETT E Convertible (43B_)	FDR329204	230	75,8	57	4+1	N	REAR
KADETT E Estate (35_, 36_, 45_, 46_)	FDR329202	200	66,5	57	4+1	N	REAR
KADETT E Estate (35_, 36_, 45_, 46_)	FDR329201	200	56,5	57	4+1	N	REAR
KADETT E Estate (35_, 36_, 45_, 46_)	FDR329204	230	75,8	57	4+1	N	REAR
KADETT E Hatchback (33_, 34_, 43_, 44_)	FDR329201	200	56,5	57	4+1	N	REAR
KADETT E Hatchback (33_, 34_, 43_, 44_)	FDR329202	200	66,5	57	4+1	N	REAR
KADETT E Hatchback (33_, 34_, 43_, 44_)	FDR329204	230	75,8	57	4+1	N	REAR
MANTA A (58_, 59_)	FDR329202	200	66,5	57	4+1	N	REAR
MANTA A (58_, 59_)	FDR329204	230	75,8	57	4+1	N	REAR
MANTA B (58_, 59_)	FDR329202	200	66,5	57	4+1	N	REAR
MANTA B (58_, 59_)	FDR329204	230	75,8	57	4+1	N	REAR
MANTA B CC (53_, 55_)	FDR329202	200	66,5	57	4+1	N	REAR
MANTA B CC (53_, 55_)	FDR329204	230	75,8	57	4+1	N	REAR
OLYMPIA A	FDR329202	200	66,5	57	4+1	N	REAR
OLYMPIA A	FDR329204	230	75,8	57	4+1	N	REAR
OLYMPIA A Coupe	FDR329202	200	66,5	57	4+1	N	REAR
OLYMPIA A Coupe	FDR329204	230	75,8	57	4+1	N	REAR
REKORD A	FDR329204	230	75,8	57	4+1	N	REAR
REKORD A Coupe	FDR329204	230	75,8	57	4+1	N	REAR
REKORD B	FDR329204	230	75,8	57	4+1	N	REAR
REKORD B Coupe	FDR329204	230	75,8	57	4+1	N	REAR
REKORD B Estate	FDR329204	230	75,8	57	4+1	N	REAR
REKORD C	FDR329204	230	75,8	57	4+1	N	REAR
REKORD C Coupe	FDR329204	230	75,8	57	4+1	N	REAR
REKORD C Estate	FDR329204	230	75,8	57	4+1	N	REAR
REKORD D	FDR329204	230	75,8	57	4+1	N	REAR
REKORD D Coupe	FDR329204	230	75,8	57	4+1	N	REAR
REKORD D Estate	FDR329204	230	75,8	57	4+1	N	REAR
REKORD E (17_-19_, 11_, 14_, 16_)	FDR329204	230	75,8	57	4+1	N	REAR
REKORD E Estate (61_, 66_, 67_)	FDR329204	230	75,8	57	4+1	N	REAR
TIGRA (95_)	FDR329203	200	84,3	39.801/50.19	4	N	REAR
TIGRA TwinTop	FDR329259	200	94,1	52.898	4	N	REAR
VECTRA A (86_, 87_)	FDR329202	200	66,5	57	4+1	N	REAR
VECTRA A Hatchback (88_, 89_)	FDR329202	200	66,5	57	4+1	N	REAR
VECTRA B (36_)	FDR329238	230,1	66,4	57	4+1	N	REAR
VECTRA B (36_)	FDR329248	230	66,75	65,5	5+1	N	REAR
VECTRA B (36_) to Chassis No W1999999;W5999999;W7999999	FDR329238	230,1	66,4	57	4+1	N	REAR
VECTRA B Estate (31_)	FDR329248	230	66,75	65,5	5+1	N	REAR
VECTRA B Estate (31_)	FDR329238	230,1	66,4	57	4+1	N	REAR
VECTRA B Estate (31_) to Chassis No W1999999;W5999999;W7999999	FDR329238	230,1	66,4	57	4+1	N	REAR
VECTRA B Hatchback (38_)	FDR329248	230	66,75	65,5	5+1	N	REAR



APPLICATION	FERODO PARTNO	DIAMETER Ø [MM]	HEIGHT [MM]	BORE [MM]	FIXING HOLES NO.	BEARING	FITTING AXLE
VECTRA B Hatchback (38_)	FDR329238	230,1	66,4	57	4+1	N	REAR
VECTRA B Hatchback (38_) to Chassis No W1999999;W5999999;W7999999	FDR329238	230,1	66,4	57	4+1	N	REAR
ZAFIRA A (F75_)	FDR329248	230	66,75	65,5	5+1	N	REAR
ZAFIRA A (F75_)	FDR329238	230,1	66,4	57	4+1	N	REAR
PEUGEOT							
1007 (KM_)	FDR329716	203	71,4	51,884	4	N	REAR
106 I (1A, 1C)	FDR329156	165	58	55,916	3	N	REAR
106 I (1A, 1C)	FDR329158	180	80	51,916	4	N	REAR
106 II (1)	FDR329158	180	80	51,916	4	N	REAR
106 II (1)	FDR329156	165	58	55,916	3	N	REAR
106 II (1)	FDR329245	203	71,4	51,884	4	N	REAR
106 Van (1_)	FDR329156	165	58	55,916	3	N	REAR
106 Van (1_)	FDR329158	180	80	51,916	4	N	REAR
106 Van (1_)	FDR329245	203	71,4	51,884	4	N	REAR
107	FDR329265	200	53,7	55	4+2+1	N	REAR
205 Box	FDR329151	180	70,7	51,884	4	N	REAR
205 I (741A/C)	FDR329151	180	70,7	51,884	4	N	REAR
205 I Convertible (741B, 20D)	FDR329151	180	70,7	51,884	4	N	REAR
205 II (20A/C)	FDR329151	180	70,7	51,884	4	N	REAR
206 Hatchback (2A/C)	FDR329158	180	80	51,916	4	N	REAR
206 Hatchback (2A/C)	FDR329245	203	71,4	51,884	4	N	REAR
206 Hatchback (2A/C)	FDR329716	203	71,4	51,884	4	N	REAR
206 Hatchback (2A/C) from Chassis No 1025589	FDR329716	203	71,4	51,884	4	N	REAR
206 Hatchback (2A/C) to Chassis No 1025488	FDR329245	203	71,4	51,884	4	N	REAR
206 Hatchback (2A/C) to Chassis No 1025588	FDR329245	203	71,4	51,884	4	N	REAR
206 Saloon	FDR329158	180	80	51,916	4	N	REAR
206 Saloon	FDR329245	203	71,4	51,884	4	N	REAR
206 Saloon	FDR329716	203	71,4	51,884	4	N	REAR
206 Saloon from Chassis No 1025589	FDR329716	203	71,4	51,884	4	N	REAR
206 Saloon to Chassis No 1025488	FDR329245	203	71,4	51,884	4	N	REAR
206 SW (2E/K)	FDR329158	180	80	51,916	4	N	REAR
206 SW (2E/K)	FDR329245	203	71,4	51,884	4	N	REAR
206 SW (2E/K) from Chassis No 1025589	FDR329716	203	71,4	51,884	4	N	REAR
206 SW (2E/K) to Chassis No 1025488	FDR329245	203	71,4	51,884	4	N	REAR
206 Van	FDR329158	180	80	51,916	4	N	REAR
206 Van	FDR329245	203	71,4	51,884	4	N	REAR
206 Van from Chassis No 1025589	FDR329716	203	71,4	51,884	4	N	REAR
206 Van to Chassis No 1025488	FDR329245	203	71,4	51,884	4	N	REAR
206+ (T3E)	FDR329158	180	80	51,916	4	N	REAR
206+ (T3E)	FDR329716	203	71,4	51,884	4	N	REAR
305 I (581A)	FDR329150	228,5	65,9	71,1	4+2	N	REAR
305 II (581M)	FDR329150	228,5	65,9	71,1	4+2	N	REAR
305 II Break (581E)	FDR329150	228,5	65,9	71,1	4+2	N	REAR
306 (7B, N3, N5)	FDR329122	180	81,6	51,93	4	N	REAR
306 (7B, N3, N5)	FDR329150	228,5	65,9	71,1	4+2	N	REAR
306 Break (7E, N3, N5)	FDR329150	228,5	65,9	71,1	4+2	N	REAR
306 Convertible (7D, N3, N5)	FDR329122	180	81,6	51,93	4	N	REAR
306 Convertible (7D, N3, N5)	FDR329150	228,5	65,9	71,1	4+2	N	REAR
306 Hatchback (7A, 7C, N3, N5)	FDR329122	180	81,6	51,93	4	N	REAR
306 Hatchback (7A, 7C, N3, N5)	FDR329150	228,5	65,9	71,1	4+2	N	REAR
306 Van (N_, 7_)	FDR329122	180	81,6	51,93	4	N	REAR
306 Van (N_, 7_)	FDR329150	228,5	65,9	71,1	4+2	N	REAR
309 I (10C, 10A)	FDR329122	180	81,6	51,93	4	N	REAR
309 I (10C, 10A)	FDR329151	180	70,7	51,884	4	N	REAR
309 II (3C, 3A)	FDR329122	180	81,6	51,93	4	N	REAR
309 II (3C, 3A)	FDR329151	180	70,7	51,884	4	N	REAR



APPLICATION	FERODO PARTNO	DIAMETER Ø [MM]	HEIGHT [MM]	BORE [MM]	FIXING HOLES NO.	BEARING	FITTING AXLE
405 I (15B)	FDR329150	228,5	65,9	71,1	4+2	N	REAR
405 I Break (15E)	FDR329150	228,5	65,9	71,1	4+2	N	REAR
405 II (4B)	FDR329150	228,5	65,9	71,1	4+2	N	REAR
405 II Break (4E)	FDR329150	228,5	65,9	71,1	4+2	N	REAR
406 (8B)	FDR329150	228,5	65,9	71,1	4+2	N	REAR
406 Break (8E/F)	FDR329150	228,5	65,9	71,1	4+2	N	REAR
406 Coupe (8C)	FDR329150	228,5	65,9	71,1	4+2	N	REAR
806 (221)	FDR329012	255	85	59	5+1	N	REAR
BOXER Box (230L)	FDR329008	254,3	98	72	5+3+2	N	REAR
BOXER Box (230L)	FDR329011	254	98	79	5+3+2	N	REAR
BOXER Box (244)	FDR329008	254,3	98	72	5+3+2	N	REAR
BOXER Bus (230P)	FDR329008	254,3	98	72	5+3+2	N	REAR
BOXER Bus (230P)	FDR329011	254	98	79	5+3+2	N	REAR
BOXER Bus (244, Z_)	FDR329008	254,3	98	72	5+3+2	N	REAR
BOXER Platform/Chassis (244)	FDR329008	254,3	98	72	5+3+2	N	REAR
BOXER Platform/Chassis (ZCT_)	FDR329008	254,3	98	72	5+3+2	N	REAR
BOXER Platform/Chassis (ZCT_)	FDR329011	254	98	79	5+3+2	N	REAR
EXPERT (224)	FDR329012	255	85	59	5+1	N	REAR
EXPERT Box (222)	FDR329012	255	85	59	5+1	N	REAR
EXPERT Platform/Chassis (223)	FDR329012	255	85	59	5+1	N	REAR
J5 Box (280L)	FDR329008	254,3	98	72	5+3+2	N	REAR
J5 Box (290L)	FDR329008	254,3	98	72	5+3+2	N	REAR
J5 Box (290L) 14" rims	FDR329008	254,3	98	72	5+3+2	N	REAR
J5 Box (290L) 16" rims	FDR329008	254,3	98	72	5+3+2	N	REAR
J5 Bus (280P) 14" rims	FDR329008	254,3	98	72	5+3+2	N	REAR
J5 Bus (280P) 16" rims	FDR329008	254,3	98	72	5+3+2	N	REAR
J5 Bus (290P)	FDR329008	254,3	98	72	5+3+2	N	REAR
J5 Bus (290P) 14" rims	FDR329008	254,3	98	72	5+3+2	N	REAR
J5 Bus (290P) 16" rims	FDR329008	254,3	98	72	5+3+2	N	REAR
J5 Platform/Chassis (280L)	FDR329008	254,3	98	72	5+3+2	N	REAR
J5 Platform/Chassis (280L) 14" rims	FDR329008	254,3	98	72	5+3+2	N	REAR
J5 Platform/Chassis (280L) 16" rims	FDR329008	254,3	98	72	5+3+2	N	REAR
J5 Platform/Chassis (290L)	FDR329008	254,3	98	72	5+3+2	N	REAR
J5 Platform/Chassis (290L) 14" rims	FDR329008	254,3	98	72	5+3+2	N	REAR
J5 Platform/Chassis (290L) 16" rims	FDR329008	254,3	98	72	5+3+2	N	REAR
PARTNER Box	FDR329150	228,5	65,9	71,1	4+2	N	REAR
PARTNER Box (5)	FDR329150	228,5	65,9	71,1	4+2	N	REAR
PARTNER Combispace (5F)	FDR329150	228,5	65,9	71,1	4+2	N	REAR
PARTNER Combispace (5F) / for vehicles without ESP;for vehicles without ABS	FDR329150	228,5	65,9	71,1	4+2	N	REAR
PARTNER Tepee / for vehicles without ESP;for vehicles without ABS	FDR329150	228,5	65,9	71,1	4+2	N	REAR

PLYMOUTH

VOYAGER / GRAND VOYAGER	FDR329347	228,3	106,2	72	5	N	REAR
VOYAGER / GRAND VOYAGER / for vehicles without ABS	FDR329290	250	77,6	57,5	5	N	REAR
VOYAGER / GRAND VOYAGER / for vehicles without ABS	FDR329346	250	77,7	72,1	5	N	REAR

PROTON

AEROBACK Hatchback (C2_A, C9_L)	FDR329281	180	65,6	64	4+2	N	REAR
JUMBUCK Pickup	FDR329281	180	65,6	64	4+2	N	REAR
PERSONA 300 (C9_M)	FDR329281	180	65,6	64	4+2	N	REAR
PERSONA 400 (C9_S)	FDR329281	180	65,6	64	4+2	N	REAR
PERSONA 400 Hatchback (C9_C, C9_S)	FDR329281	180	65,6	64	4+2	N	REAR
SATRIA (C9_M)	FDR329281	180	65,6	64	4+2	N	REAR
WIRA	FDR329281	180	65,6	64	4+2	N	REAR
WIRA Hatchback	FDR329281	180	65,6	64	4+2	N	REAR



APPLICATION	FERODO PARTNO	DIAMETER Ø [MM]	HEIGHT [MM]	BORE [MM]	FIXING HOLES NO.	BEARING	FITTING AXLE
RENAULT							
11 (B/C37_) / for vehicles without ABS	FDR329106	180,2	82,9	51,925	4	N	REAR
11 Box (S37_) / for vehicles without ABS	FDR329106	180,2	82,9	51,925	4	N	REAR
19 I (B/C53_) / for vehicles without ABS	FDR329106	180,2	82,9	51,925	4	N	REAR
19 I Box (S53_) / for vehicles without ABS	FDR329106	180,2	82,9	51,925	4	N	REAR
19 I Cabriolet (D53_)	FDR329224	180	83	51,884	4+2	N	REAR
19 I Cabriolet (D53_) / for vehicles without ABS	FDR329106	180,2	82,9	51,925	4	N	REAR
19 I Chamade (L53_) / for vehicles without ABS	FDR329106	180,2	82,9	51,925	4	N	REAR
19 II (B/C53_) / for vehicles without ABS	FDR329106	180,2	82,9	51,925	4	N	REAR
19 II Box (S53_) / for vehicles without ABS	FDR329106	180,2	82,9	51,925	4	N	REAR
19 II Cabriolet (D53_, 853_) / for vehicles without ABS	FDR329106	180,2	82,9	51,925	4	N	REAR
19 II Chamade (L53_) / for vehicles without ABS	FDR329106	180,2	82,9	51,925	4	N	REAR
21 (B48_) / for vehicles without ABS	FDR329106	180,2	82,9	51,925	4	N	REAR
21 Saloon (L48_) / for vehicles without ABS	FDR329106	180,2	82,9	51,925	4	N	REAR
5 (122_) / for vehicles without ABS	FDR329106	180,2	82,9	51,925	4	N	REAR
9 (L42_) / for vehicles without ABS	FDR329106	180,2	82,9	51,925	4	N	REAR
CLIO I (B/C57_, 5/357_)	FDR329224	180	83	51,884	4+2	N	REAR
CLIO I (B/C57_, 5/357_) / for vehicles without ABS	FDR329106	180,2	82,9	51,925	4	N	REAR
CLIO I (B/C57_, 5/357_) / for vehicles without ABS	FDR329224	180	83	51,884	4+2	N	REAR
CLIO I Box (S57_)	FDR329224	180	83	51,884	4+2	N	REAR
CLIO I Box (S57_) / for vehicles without ABS	FDR329106	180,2	82,9	51,925	4	N	REAR
CLIO II (BBO/1/2_, CBO/1/2_)	FDR329224	180	83	51,884	4+2	N	REAR
CLIO II (BBO/1/2_, CBO/1/2_) / for vehicles without ABS	FDR329224	180	83	51,884	4+2	N	REAR
CLIO II Box (SBO/1/2_)	FDR329224	180	83	51,884	4+2	N	REAR
CLIO II Box (SBO/1/2_) / for vehicles without ABS	FDR329224	180	83	51,884	4+2	N	REAR
CLIO III (BR0/1, CR0/1) / for vehicles without ABS	FDR329731	203,3	76	51,908	4	Y	REAR
CLIO III (BR0/1, CR0/1) / for vehicles without ESP;for vehicles without ABS	FDR329731	203,3	76	51,908	4	Y	REAR
KANGOO (KCO/1_) / for vehicles with ABS	FDR329219	203,2	76	54,93	4	N	REAR
KANGOO Express (FC0/1_) / for vehicles with ABS	FDR329219	203,2	76	54,93	4	N	REAR
LOGAN I Estate (KS_)	FDR329224	180	83	51,884	4+2	N	REAR
MEGANE I (BA0/1_)	FDR329114	203,2	76	51,916	4	N	REAR
MEGANE I Cabriolet (EA0/1_)	FDR329114	203,2	76	51,916	4	N	REAR
MEGANE I Classic (LA0/1_)	FDR329114	203,2	76	51,916	4	N	REAR
MEGANE I Coach (DA0/1_)	FDR329114	203,2	76	51,916	4	N	REAR
MEGANE I Grandtour (KA0/1_)	FDR329114	203,2	76	51,916	4	N	REAR
MODUS / GRAND MODUS (F/JPO_) / for vehicles without ABS	FDR329731	203,3	76	51,908	4	Y	REAR
MODUS / GRAND MODUS (F/JPO_) / for vehicles without ESP;for vehicles without ABS	FDR329731	203,3	76	51,908	4	Y	REAR
RAPID Box (F40_, G40_) / for vehicles without ABS	FDR329106	180,2	82,9	51,925	4	N	REAR
SUPER 5 (B/C40_)	FDR329224	180	83	51,884	4+2	N	REAR
SUPER 5 (B/C40_) / for vehicles without ABS	FDR329106	180,2	82,9	51,925	4	N	REAR
SUPER 5 Box (S40_) / for vehicles without ABS	FDR329106	180,2	82,9	51,925	4	N	REAR
THALIA I (LBO/1/2_)	FDR329114	203,2	76	51,916	4	N	REAR
THALIA I (LBO/1/2_)	FDR329114	203,2	76	51,916	4	N	REAR
THALIA I (LBO/1/2_) / for vehicles without ABS	FDR329224	180	83	51,884	4+2	N	REAR
THALIA II (LU1/2_) / for vehicles without ABS	FDR329224	180	83	51,884	4+2	N	REAR
TRAFIC Bus (TXW) / for vehicles without ABS	FDR329106	180,2	82,9	51,925	4	N	REAR
TWINGO (CO6_) / for vehicles without ABS	FDR329224	180	83	51,884	4+2	N	REAR
TWINGO I (CO6_)	FDR329224	180	83	51,884	4+2	N	REAR
TWINGO I (CO6_) / for vehicles without ABS	FDR329224	180	83	51,884	4+2	N	REAR
TWINGO I (CO6_) / for vehicles without ABS	FDR329106	180,2	82,9	51,925	4	N	REAR
TWINGO I Box (S06_) / for vehicles without ABS	FDR329224	180	83	51,884	4+2	N	REAR
TWINGO I Box (S06_) / for vehicles without ABS	FDR329106	180,2	82,9	51,925	4	N	REAR
ROVER							
200 (XH)	FDR329060	180	61,5	61	4+2	N	REAR



APPLICATION	FERODO PARTNO	DIAMETER Ø [MM]	HEIGHT [MM]	BORE [MM]	FIXING HOLES NO.	BEARING	FITTING AXLE
SEAT							
127 (127A)	FDR329000	185,4	53,3	59	4+2	N	REAR
128	FDR329000	185,4	53,3	59	4+2	N	REAR
133	FDR329000	185,4	53,3	59	4+2	N	REAR
850	FDR329000	185,4	53,3	59	4+2	N	REAR
AROSA (6H)	FDR329705*	180	74,6	39.82/50.23	4	Y	REAR
AROSA (6H) / for vehicles without ABS	FDR329705*	180	74,6	39.82/50.23	4	Y	REAR
CORDOBA (6K1, 6K2)	FDR329216	180	53,1	61	4	N	REAR
CORDOBA (6K1, 6K2) / for vehicles without ABS	FDR329705*	180	74,6	39.82/50.23	4	Y	REAR
CORDOBA (6K2) / for vehicles without ABS	FDR329705*	180	74,6	39.82/50.23	4	Y	REAR
CORDOBA (6L2)	FDR329253	200	59,1	65	5+1	N	REAR
CORDOBA (6L2) 14" rims	FDR329253	200	59,1	65	5+1	N	REAR
CORDOBA (6L2) 15" rims	FDR329253	200	59,1	65	5+1	N	REAR
CORDOBA Vario (6K5)	FDR329216	180	53,1	61	4	N	REAR
CORDOBA Vario (6K5)	FDR329705*	180	74,6	39.82/50.23	4	Y	REAR
CORDOBA Vario (6K5) / for vehicles without ABS	FDR329705*	180	74,6	39.82/50.23	4	Y	REAR
FURA (025A)	FDR329000	185,4	53,3	59	4+2	N	REAR
IBIZA I (021A)	FDR329000	185,4	53,3	59	4+2	N	REAR
IBIZA II (6K1) / for vehicles without ABS	FDR329705*	180	74,6	39.82/50.23	4	Y	REAR
IBIZA III (6K1) / for vehicles without ABS	FDR329705*	180	74,6	39.82/50.23	4	Y	REAR
IBIZA IV (6L1)	FDR329253	200	59,1	65	5+1	N	REAR
IBIZA IV (6L1) for PR Code 1KM / for vehicles without ABS	FDR329253	200	59,1	65	5+1	N	REAR
IBIZA V (6J5, 6P1) / for vehicles without ABS	FDR329253	200	59,1	65	5+1	N	REAR
IBIZA V (6J5, 6P1) for PR Code 1KM / for vehicles without ABS	FDR329253	200	59,1	65	5+1	N	REAR
IBIZA V SPORTCOUPE (6J1, 6P5) / for vehicles without ABS	FDR329253	200	59,1	65	5+1	N	REAR
IBIZA V SPORTCOUPE (6J1, 6P5) for PR Code 1KM / for vehicles without ABS	FDR329253	200	59,1	65	5+1	N	REAR
IBIZA V SPORTCOUPE (6J1, 6P5) for PR Code 1KM / for vehicles without ABS	FDR329238	230,1	66,4	57	4+1	N	REAR
IBIZA V ST (6J8, 6P8) for PR Code 1KM / for vehicles without ABS	FDR329253	200	59,1	65	5+1	N	REAR
INCA (6K9)	FDR329313	230	57,6	65	4+1	N	REAR
INCA (6K9) / for vehicles without ABS	FDR329733	230	90,1	50,215	4	N	REAR
INCA (6K9) from Chassis No 9K-X-023408	FDR329313	230	57,6	65	4+1	N	REAR
INCA (6K9) to Chassis No 9K-X-023407 / for vehicles without ABS	FDR329733	230	90,1	50,215	4	N	REAR
MALAGA (023A)	FDR329000	185,4	53,3	59	4+2	N	REAR
MARBELLA (28)	FDR329000	185,4	53,3	59	4+2	N	REAR
MARBELLA Box (028A)	FDR329000	185,4	53,3	59	4+2	N	REAR
PANDA (141A)	FDR329000	185,4	53,3	59	4+2	N	REAR
RITMO (138)	FDR329000	185,4	53,3	59	4+2	N	REAR
RONDA (022A)	FDR329000	185,4	53,3	59	4+2	N	REAR
TERRA (24)	FDR329000	185,4	53,3	59	4+2	N	REAR
TERRA Box (024A)	FDR329000	185,4	53,3	59	4+2	N	REAR
TOLEDO I (1L)	FDR329705*	180	74,6	39.82/50.23	4	Y	REAR
SKODA							
FABIA (6Y2) for PR Code 1KM	FDR329253	200	59,1	65	5+1	N	REAR
FABIA Combi (6Y5) for PR Code 1KM	FDR329253	200	59,1	65	5+1	N	REAR
FABIA Combi for PR Code 1KM	FDR329253	200	59,1	65	5+1	N	REAR
FABIA for PR Code 1KM	FDR329253	200	59,1	65	5+1	N	REAR
FABIA Praktik for PR Code 1KM	FDR329253	200	59,1	65	5+1	N	REAR
FABIA Saloon (6Y3) for PR Code 1KM	FDR329253	200	59,1	65	5+1	N	REAR
OCTAVIA (1U2)	FDR329250	230,2	57,4	65,2	5+1	N	REAR
OCTAVIA (1U2) for PR Code 1KG/1KN	FDR329250	230,2	57,4	65,2	5+1	N	REAR
OCTAVIA (1U2) for PR Code 1KN/1KG	FDR329250	230,2	57,4	65,2	5+1	N	REAR
OCTAVIA Combi (1U5)	FDR329250	230,2	57,4	65,2	5+1	N	REAR
OCTAVIA Combi (1U5) for PR Code 1KG/1KN	FDR329250	230,2	57,4	65,2	5+1	N	REAR
ROOMSTER (5J)	FDR329250	230,2	57,4	65,2	5+1	N	REAR
ROOMSTER (5J) for PR Code 1KC	FDR329250	230,2	57,4	65,2	5+1	N	REAR
ROOMSTER Praktik (5J)	FDR329250	230,2	57,4	65,2	5+1	N	REAR



APPLICATION	FERODO PARTNO	DIAMETER Ø [MM]	HEIGHT [MM]	BORE [MM]	FIXING HOLES NO.	BEARING	FITTING AXLE
ROOMSTER Praktik (5J)	FDR329253	200	59,1	65	5+1	N	REAR
ROOMSTER Praktik (5J) for PR Code 1KC	FDR329250	230,2	57,4	65,2	5+1	N	REAR
SMART							
CABRIO (450)	FDR329263	203	58,8	58	3+1	N	REAR
CITY-COUPÉ (450)	FDR329263	203	58,8	58	3+1	N	REAR
CROSSBLADE (450)	FDR329263	203	58,8	58	3+1	N	REAR
FORTWO Cabrio (450)	FDR329263	203	58,8	58	3+1	N	REAR
FORTWO Cabrio (451)	FDR329263	203	58,8	58	3+1	N	REAR
FORTWO Coupe (450)	FDR329263	203	58,8	58	3+1	N	REAR
FORTWO Coupe (451)	FDR329263	203	58,8	58	3+1	N	REAR
ROADSTER (452)	FDR329263	203	58,8	58	3+1	N	REAR
ROADSTER Coupe (452)	FDR329263	203	58,8	58	3+1	N	REAR
SUBARU							
FORESTER (SF)	FDR329314	228,4	63,5	58	5	N	REAR
FORESTER (SG)	FDR329314	228,4	63,5	58	5	N	REAR
IMPREZA Coupe (GFC)	FDR329314	228,4	63,5	58	5	N	REAR
IMPREZA Estate (GD, GG)	FDR329314	228,4	63,5	58	5	N	REAR
IMPREZA Estate (GF)	FDR329314	228,4	63,5	58	5	N	REAR
IMPREZA Estate (GG)	FDR329314	228,4	63,5	58	5	N	REAR
IMPREZA Saloon (GC)	FDR329314	228,4	63,5	58	5	N	REAR
IMPREZA Saloon (GD)	FDR329314	228,4	63,5	58	5	N	REAR
IMPREZA Saloon (GD, GG)	FDR329314	228,4	63,5	58	5	N	REAR
JUSTY II (JMA, MS)	FDR329329	200,2	56,5	64,2	4+2+2	N	REAR
LEGACY I (BC)	FDR329314	228,4	63,5	58	5	N	REAR
LEGACY I Estate (BC, BJB)	FDR329314	228,4	63,5	58	5	N	REAR
LEGACY II (BD, BG)	FDR329314	228,4	63,5	58	5	N	REAR
LEGACY II Estate (BD, BG)	FDR329314	228,4	63,5	58	5	N	REAR
SUZUKI							
ALTO (HA11)	FDR329327*	180,2	65,5	46.926/51.916	4	N	REAR
ALTO (HA12, HA23)	FDR329327*	180,2	65,5	46.926/51.916	4	N	REAR
ALTO (HA24)	FDR329251	180	63	51.916	4	N	REAR
GRAND VITARA I (FT)	FDR329277	220	60,8	100	5+2	N	REAR
IGNIS (FH) / for vehicles without ABS	FDR329251	180	63	51.916	4	N	REAR
SWIFT Convertible (SF413)	FDR329289*	180	51,3	64	4+2+2	N	REAR
SWIFT Convertible (SF413)	FDR329329	200,2	56,5	64,2	4+2+2	N	REAR
SWIFT II Hatchback (EA, MA)	FDR329329	200,2	56,5	64,2	4+2+2	N	REAR
SWIFT II Hatchback (EA, MA)	FDR329289*	180	51,3	64	4+2+2	N	REAR
SWIFT II Saloon (AH, AJ)	FDR329289*	180	51,3	64	4+2+2	N	REAR
SWIFT II Saloon (AH, AJ)	FDR329329	200,2	56,5	64,2	4+2+2	N	REAR
VITARA (ET, TA)	FDR329348	254	66,4	50,2	5+4	N	REAR
VITARA (ET, TA)	FDR329310	254	65,8	100,1	5	N	REAR
VITARA (ET, TA)	FDR329277	220	60,8	100	5+2	N	REAR
VITARA Cabrio (ET, TA)	FDR329348	254	66,4	50,2	5+4	N	REAR
VITARA Cabrio (ET, TA)	FDR329310	254	65,8	100,1	5	N	REAR
WAGON R+ (MM)	FDR329251	180	63	51.916	4	N	REAR
X-90 (EL)	FDR329277	220	60,8	100	5+2	N	REAR
TOYOTA							
4 RUNNER (RN10_, VZN13_, VZN10_, RN13_)	FDR329091	295	83,1	106,1	6+6+2	N	REAR
4 RUNNER (RN5_, LN5_, VZN6_, RN7_, RN6_)	FDR329091	295	83,1	106,1	6+6+2	N	REAR
AVENSIS (_T22_)	FDR329350	228,5	66,5	55	5+2	N	REAR
AVENSIS Liftback (_T22_)	FDR329350	228,5	66,5	55	5+2	N	REAR
AVENSIS Station Wagon (_T22_)	FDR329350	228,5	66,5	55	5+2	N	REAR
AYGO (WNB1_, KGB1_)	FDR329265	200	53,7	55	4+2+1	N	REAR



APPLICATION	FERODO PARTNO	DIAMETER Ø [MM]	HEIGHT [MM]	BORE [MM]	FIXING HOLES NO.	BEARING	FITTING AXLE
DYNA Platform/Chassis (KD_, LY_, TRY2_, KDY2_, XZU4_, XZU3_,	FDR329091	295	83,1	106,1	6+6+2	N	REAR
HIACE II Box (LH5_, YH7_, LH7_, LH6_, YH6_, YH5_)	FDR329091	295	83,1	106,1	6+6+2	N	REAR
HIACE II Wagon (LH7_, LH5_, LH6_, YH7_, YH6_, YH5_)	FDR329091	295	83,1	106,1	6+6+2	N	REAR
HIACE III Box (YH7_, LH6_, LH7_, LH5_, YH5_, YH6_)	FDR329312	270,4	81	67,1	5+5+2	N	REAR
HIACE III Box (YH7_, LH6_, LH7_, LH5_, YH5_, YH6_)	FDR329091	295	83,1	106,1	6+6+2	N	REAR
HIACE III Wagon (LH1_, RZH1_)	FDR329312	270,4	81	67,1	5+5+2	N	REAR
HIACE III Wagon (LH1_, RZH1_)	FDR329091	295	83,1	106,1	6+6+2	N	REAR
HILUX Closed Off-Road Vehicle (RZN1_, LN1_)	FDR329091	295	83,1	106,1	6+6+2	N	REAR
HILUX II Pickup (LN8_, RN5_, LN6_, YN6_, YN5_, LN5_, RN6_)	FDR329091	295	83,1	106,1	6+6+2	N	REAR
PASEO Coupe (EL54) / for vehicles with ABS	FDR329330	180	94,5	39.801/48.911	4	Y	REAR
PREVIA (TCR2_, TCR1_)	FDR329315	255	71,9	60,1	5+2	N	REAR
RAV 4 I (SXA1_)	FDR329342	228,6	64,4	62,1	5+2+1	N	REAR
RAV 4 I Cabrio (SXA1_)	FDR329342	228,6	64,4	62,1	5+2+1	N	REAR
RAV 4 II (CLA2_, XA2_, ZCA2_, ACA2_)	FDR329342	228,6	64,4	62,1	5+2+1	N	REAR
STARLET (EP91) / for vehicles with ABS	FDR329330	180	94,5	39.801/48.911	4	Y	REAR
TERCEL Hatchback	FDR329330	180	94,5	39.801/48.911	4	Y	REAR
YARIS (SCP1_, NLP1_, NCP1_)	FDR329257	200	51,5	55	4+2	N	REAR
YARIS VERSO (_NLP2_, _NCP2_)	FDR329257	200	51,5	55	4+2	N	REAR

VAUXHALL

AGILA Mk I (A)	FDR329251	180	63	51,916	4	N	REAR
ASTRA	FDR329201	200	56,5	57	4+1	N	REAR
ASTRA	FDR329202	200	66,5	57	4+1	N	REAR
ASTRA Estate	FDR329202	200	66,5	57	4+1	N	REAR
ASTRA Estate	FDR329204	230	75,8	57	4+1	N	REAR
ASTRA Hatchback	FDR329202	200	66,5	57	4+1	N	REAR
ASTRA Hatchback	FDR329201	200	56,5	57	4+1	N	REAR
ASTRA Mk II Belmont	FDR329201	200	56,5	57	4+1	N	REAR
ASTRA Mk II Belmont	FDR329202	200	66,5	57	4+1	N	REAR
ASTRA Mk II Belmont	FDR329204	230	75,8	57	4+1	N	REAR
ASTRA Mk II Convertible	FDR329202	200	66,5	57	4+1	N	REAR
ASTRA Mk II Estate	FDR329201	200	56,5	57	4+1	N	REAR
ASTRA Mk II Estate	FDR329202	200	66,5	57	4+1	N	REAR
ASTRA Mk II Estate	FDR329204	230	75,8	57	4+1	N	REAR
ASTRA Mk II Hatchback	FDR329201	200	56,5	57	4+1	N	REAR
ASTRA Mk II Hatchback	FDR329202	200	66,5	57	4+1	N	REAR
ASTRA Mk III (F)	FDR329201	200	56,5	57	4+1	N	REAR
ASTRA Mk III (F)	FDR329202	200	66,5	57	4+1	N	REAR
ASTRA Mk III (F) Convertible	FDR329202	200	66,5	57	4+1	N	REAR
ASTRA Mk III (F) Estate	FDR329238	230,1	66,4	57	4+1	N	REAR
ASTRA Mk III (F) Estate	FDR329202	200	66,5	57	4+1	N	REAR
ASTRA Mk III (F) Hatchback	FDR329201	200	56,5	57	4+1	N	REAR
ASTRA Mk III (F) Hatchback	FDR329202	200	66,5	57	4+1	N	REAR
ASTRA Mk III (F) Hatchback	FDR329238	230,1	66,4	57	4+1	N	REAR
ASTRA Mk IV (G) Estate	FDR329238	230,1	66,4	57	4+1	N	REAR
ASTRA Mk IV (G) Estate	FDR329201	200	56,5	57	4+1	N	REAR
ASTRA Mk IV (G) Hatchback	FDR329238	230,1	66,4	57	4+1	N	REAR
ASTRA Mk IV (G) Hatchback	FDR329201	200	56,5	57	4+1	N	REAR
ASTRA Mk IV (G) Saloon	FDR329238	230,1	66,4	57	4+1	N	REAR
ASTRA Mk IV (G) Saloon	FDR329201	200	56,5	57	4+1	N	REAR
ASTRAMAX	FDR329204	230	75,8	57	4+1	N	REAR
ASTRAVAN Mk III (F)	FDR329202	200	66,5	57	4+1	N	REAR
ASTRAVAN Mk III (F)	FDR329238	230,1	66,4	57	4+1	N	REAR
ASTRAVAN Mk IV (G)	FDR329238	230,1	66,4	57	4+1	N	REAR
BRAVA Pickup	FDR329006	228,3	61,1	59	4+2+1	N	REAR
CARLTON Mk II	FDR329204	230	75,8	57	4+1	N	REAR
CARLTON Mk II Estate	FDR329204	230	75,8	57	4+1	N	REAR
CARLTON Mk III Estate	FDR329202	200	66,5	57	4+1	N	REAR
CAVALIER	FDR329202	200	66,5	57	4+1	N	REAR
CAVALIER	FDR329204	230	75,8	57	4+1	N	REAR
CAVALIER CC	FDR329202	200	66,5	57	4+1	N	REAR



APPLICATION	FERODO PARTNO	DIAMETER Ø [MM]	HEIGHT [MM]	BORE [MM]	FIXING HOLES NO.	BEARING	FITTING AXLE
CAVALIER CC	FDR329204	230	75,8	57	4+1	N	REAR
CAVALIER Coupe	FDR329204	230	75,8	57	4+1	N	REAR
CAVALIER Mk II	FDR329202	200	66,5	57	4+1	N	REAR
CAVALIER Mk II Convertible	FDR329202	200	66,5	57	4+1	N	REAR
CAVALIER Mk II Hatchback	FDR329202	200	66,5	57	4+1	N	REAR
CAVALIER Mk III (87)	FDR329202	200	66,5	57	4+1	N	REAR
CAVALIER Mk III Hatchback	FDR329202	200	66,5	57	4+1	N	REAR
CAVALIER Saloon	FDR329202	200	66,5	57	4+1	N	REAR
CAVALIER Saloon	FDR329204	230	75,8	57	4+1	N	REAR
CHEVETTE	FDR329202	200	66,5	57	4+1	N	REAR
CHEVETTE Estate	FDR329202	200	66,5	57	4+1	N	REAR
CHEVETTE Hatchback	FDR329202	200	66,5	57	4+1	N	REAR
COMBO Mk I (B)	FDR329204	230	75,8	57	4+1	N	REAR
COMBO Mk II (C) Box Body / Estate (F25)	FDR329238	230,1	66,4	57	4+1	N	REAR
CORSA Mk I (B) / for vehicles with ABS	FDR329203	200	84,3	39.801/50.19	4	N	REAR
CORSA Mk II (C) (W5L, F08) / for vehicles with ABS	FDR329259	200	94,1	52,898	4	N	REAR
CORSA Mk II (C) (W5L, F08) / for vehicles without ABS	FDR329713	200,2	85,8	52,9	4	Y	REAR
CORSA Mk III (D) (L_8) / for vehicles with ABS	FDR329259	200	94,1	52,898	4	N	REAR
CORSAVAN Mk I (B)	FDR329204	230	75,8	57	4+1	N	REAR
CORSAVAN Mk II (C)	FDR329238	230,1	66,4	57	4+1	N	REAR
CORSAVAN Mk II (C) / for vehicles with ABS	FDR329259	200	94,1	52,898	4	N	REAR
CORSAVAN Mk II (C) / for vehicles without ABS	FDR329713	200,2	85,8	52,9	4	Y	REAR
MIDI Bus	FDR329006	228,3	61,1	59	4+2+1	N	REAR
MIDI II Bus	FDR329006	228,3	61,1	59	4+2+1	N	REAR
NOVA Hatchback	FDR329203	200	84,3	39.801/50.19	4	N	REAR
TIGRA Mk I (F07)	FDR329203	200	84,3	39.801/50.19	4	N	REAR
TIGRA TwinTop	FDR329259	200	94,1	52,898	4	N	REAR
VECTRA (B)	FDR329238	230,1	66,4	57	4+1	N	REAR
VECTRA (B)	FDR329248	230	66,75	65,5	5+1	N	REAR
VECTRA (B) Estate to Chassis No W1999999;W5999999;W7999999	FDR329238	230,1	66,4	57	4+1	N	REAR
VECTRA (B) Hatchback	FDR329238	230,1	66,4	57	4+1	N	REAR
VECTRA (B) Hatchback	FDR329248	230	66,75	65,5	5+1	N	REAR
VICEROY	FDR329204	230	75,8	57	4+1	N	REAR
ZAFIRA Mk I (A) (F75)	FDR329248	230	66,75	65,5	5+1	N	REAR
ZAFIRA Mk I (A) (F75) / for vehicles without ABS	FDR329238	230,1	66,4	57	4+1	N	REAR

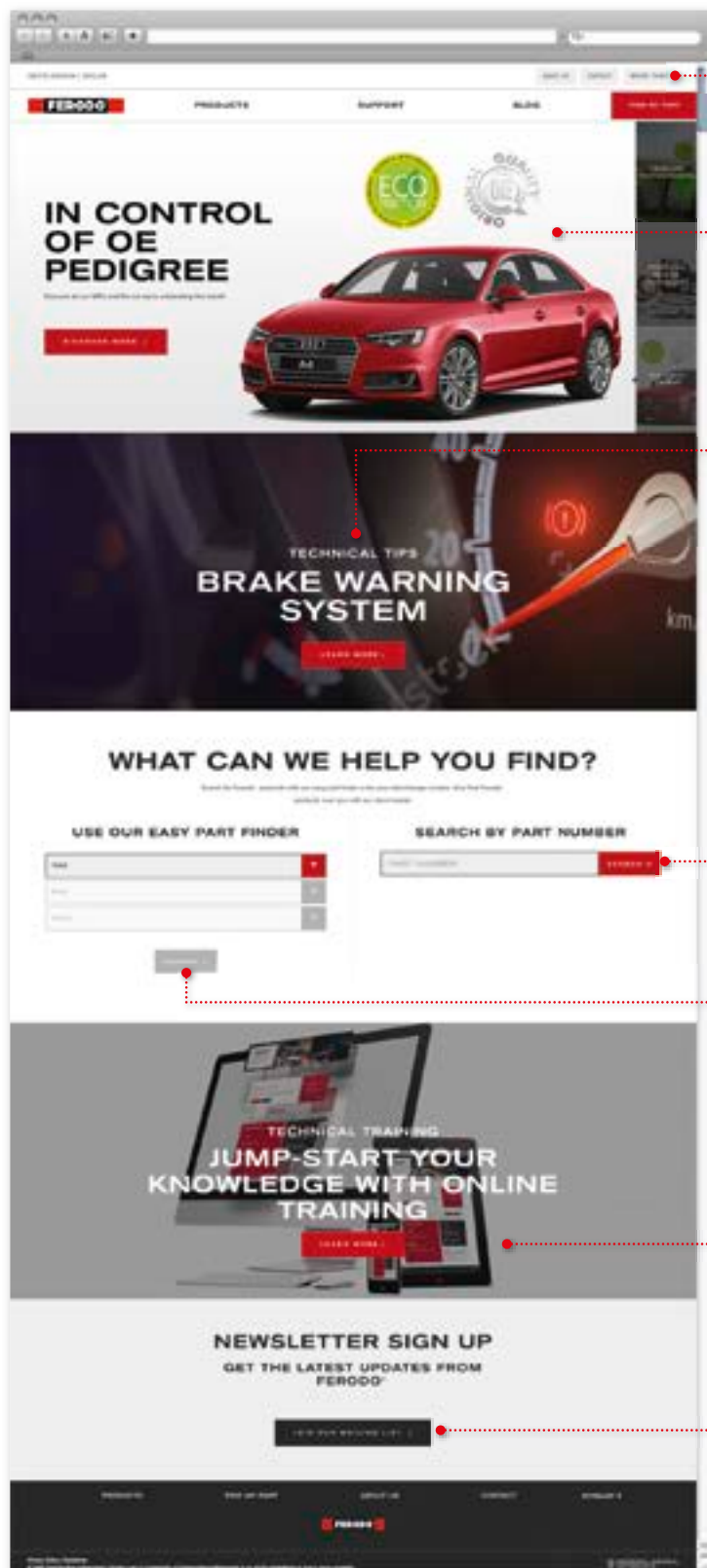
VW							
CADDY II Box (9K9A)	FDR329313	230	57,6	65	4+1	N	REAR
CADDY II Box (9K9A) / for vehicles without ABS	FDR329733	230	90,1	50,215	4	N	REAR
CADDY II Box (9K9A) from Chassis No 9K-Y-500748	FDR329313	230	57,6	65	4+1	N	REAR
CADDY II Box (9K9A) to Chassis No 9K-Y-500747 / for vehicles without ABS	FDR329733	230	90,1	50,215	4	N	REAR
CADDY II Estate (9K9B)	FDR329313	230	57,6	65	4+1	N	REAR
CADDY II Estate (9K9B) / for vehicles without ABS	FDR329733	230	90,1	50,215	4	N	REAR
CADDY II Estate (9K9B) from Chassis No 9K-Y-500748	FDR329313	230	57,6	65	4+1	N	REAR
CADDY II Estate (9K9B) to Chassis No 9K-Y-500747 / for vehicles without ABS	FDR329733	230	90,1	50,215	4	N	REAR
DERBY (86)	FDR329705*	180	74,6	39.82/50.23	4	Y	REAR
DERBY (86C, 80)	FDR329705*	180	74,6	39.82/50.23	4	Y	REAR
FOX (5Z1, 5Z3)	FDR329253	200	59,1	65	5+1	N	REAR
GOLF I (17)	FDR329704	200	81,5	39.801/50.215	4	N	REAR
GOLF I (17)	FDR329705*	180	74,6	39.82/50.23	4	Y	REAR
GOLF I Cabriolet (155)	FDR329705*	180	74,6	39.82/50.23	4	Y	REAR
GOLF II (19E, 1G1)	FDR329705*	180	74,6	39.82/50.23	4	Y	REAR
GOLF II (19E, 1G1)	FDR329704	200	81,5	39.801/50.215	4	N	REAR
GOLF II (19E, 1G1) / for vehicles without ABS	FDR329705*	180	74,6	39.82/50.23	4	Y	REAR
GOLF III (1H1)	FDR329704	200	81,5	39.801/50.215	4	N	REAR
JETTA I (16)	FDR329705*	180	74,6	39.82/50.23	4	Y	REAR
JETTA II (19E, 1G2, 165)	FDR329705*	180	74,6	39.82/50.23	4	Y	REAR
JETTA II (19E, 1G2, 165)	FDR329704	200	81,5	39.801/50.215	4	N	REAR
JETTA II (19E, 1G2, 165) / for vehicles without ABS	FDR329705*	180	74,6	39.82/50.23	4	Y	REAR
PASSAT (32)	FDR329705*	180	74,6	39.82/50.23	4	Y	REAR
PASSAT (32)	FDR329704	200	81,5	39.801/50.215	4	N	REAR



APPLICATION	FERODO PARTNO	DIAMETER Ø [MM]	HEIGHT [MM]	BORE [MM]	FIXING HOLES NO.	BEARING	FITTING AXLE
PASSAT (32B)	FDR329704	200	81,5	39.801/50.215	4	N	REAR
PASSAT (32B)	FDR329705*	180	74,6	39.82/50.23	4	Y	REAR
PASSAT (3A2, 35I)	FDR329130	230	84,3	39.801/50.215	4	N	REAR
PASSAT (3A2, 35I)	FDR329704	200	81,5	39.801/50.215	4	N	REAR
PASSAT (3A2, 35I) from Chassis No 31L085001	FDR329130	230	84,3	39.801/50.215	4	N	REAR
PASSAT (3A2, 35I) to Chassis No 3A5300000	FDR329130	230	84,3	39.801/50.215	4	N	REAR
PASSAT Saloon (32B)	FDR329704	200	81,5	39.801/50.215	4	N	REAR
PASSAT Saloon (32B)	FDR329705*	180	74,6	39.82/50.23	4	Y	REAR
PASSAT Variant (32B)	FDR329704	200	81,5	39.801/50.215	4	N	REAR
PASSAT Variant (33)	FDR329704	200	81,5	39.801/50.215	4	N	REAR
PASSAT Variant (3A5, 35I)	FDR329130	230	84,3	39.801/50.215	4	N	REAR
PASSAT Variant (3A5, 35I) to Chassis No 3A5300000	FDR329130	230	84,3	39.801/50.215	4	N	REAR
POLO (6N1)	FDR329705*	180	74,6	39.82/50.23	4	Y	REAR
POLO (6N1) / for vehicles without ABS	FDR329705*	180	74,6	39.82/50.23	4	Y	REAR
POLO (6N2)	FDR329253	200	59,1	65	5+1	N	REAR
POLO (6N2) / for vehicles without ABS	FDR329705*	180	74,6	39.82/50.23	4	Y	REAR
POLO (6R, 6C) for PR Code 1KM	FDR329253	200	59,1	65	5+1	N	REAR
POLO (86)	FDR329705*	180	74,6	39.82/50.23	4	Y	REAR
POLO (86C, 80)	FDR329705*	180	74,6	39.82/50.23	4	Y	REAR
POLO (9N_)	FDR329253	200	59,1	65	5+1	N	REAR
POLO (9N_) for PR Code 1KB	FDR329253	200	59,1	65	5+1	N	REAR
POLO Box (6NF) / for vehicles without ABS	FDR329705*	180	74,6	39.82/50.23	4	Y	REAR
POLO Box (86CF)	FDR329705*	180	74,6	39.82/50.23	4	Y	REAR
POLO CLASSIC (6KV2)	FDR329705*	180	74,6	39.82/50.23	4	Y	REAR
POLO CLASSIC (6KV2) / for vehicles without ABS	FDR329705*	180	74,6	39.82/50.23	4	Y	REAR
POLO CLASSIC (86C, 80)	FDR329705*	180	74,6	39.82/50.23	4	Y	REAR
POLO Coupe (86C, 80)	FDR329705*	180	74,6	39.82/50.23	4	Y	REAR
POLO Saloon (9A4)	FDR329253	200	59,1	65	5+1	N	REAR
POLO Saloon for PR Code 1KB	FDR329253	200	59,1	65	5+1	N	REAR
POLO Saloon for PR Code 1KC	FDR329250	230,2	57,4	65,2	5+1	N	REAR
POLO Variant (6KV5)	FDR329705*	180	74,6	39.82/50.23	4	Y	REAR
SANTANA (32B)	FDR329704	200	81,5	39.801/50.215	4	N	REAR
SANTANA (32B)	FDR329705*	180	74,6	39.82/50.23	4	Y	REAR
SCIROCCO (53)	FDR329704	200	81,5	39.801/50.215	4	N	REAR
SCIROCCO (53)	FDR329705*	180	74,6	39.82/50.23	4	Y	REAR
SCIROCCO (53B)	FDR329705*	180	74,6	39.82/50.23	4	Y	REAR
TARO	FDR329091	295	83,1	106,1	6+6+2	N	REAR
TRANSPORTER III Box / for vehicles with ABS	FDR329131	252,1	77,7	65	5+2	N	REAR
TRANSPORTER III Bus / for vehicles with ABS	FDR329131	252,1	77,7	65	5+2	N	REAR
TRANSPORTER III Platform/Chassis / for vehicles with ABS	FDR329131	252,1	77,7	65	5+2	N	REAR
TRANSPORTER IV Box (70XA)	FDR329137*	268,2	88,1	68,1	5+3+1	N	REAR
TRANSPORTER IV Box (70XA) / for vehicles without ABS	FDR329137*	268,2	88,1	68,1	5+3+1	N	REAR
TRANSPORTER IV Bus (70XB, 70XC, 7DB, 7DW, 7DK) / for vehicles without ABS	FDR329137*	268,2	88,1	68,1	5+3+1	N	REAR
TRANSPORTER IV Bus (70XB, 70XC, 7DB, 7DW, 7DK) 14" rims / for vehicles without ABS	FDR329137*	268,2	88,1	68,1	5+3+1	N	REAR
TRANSPORTER IV Bus (70XB, 70XC, 7DB, 7DW, 7DK) 15" rims / for vehicles without ABS	FDR329137*	268,2	88,1	68,1	5+3+1	N	REAR
TRANSPORTER IV Platform/Chassis (70XD) / for vehicles without ABS	FDR329137*	268,2	88,1	68,1	5+3+1	N	REAR
YUGO							
311 / 411	FDR329000	185,4	53,3	59	4+2	N	REAR
511 / 513	FDR329000	185,4	53,3	59	4+2	N	REAR
SANA	FDR329000	185,4	53,3	59	4+2	N	REAR
TEMPO	FDR329000	185,4	53,3	59	4+2	N	REAR
ZASTAVA							
101 (1100)	FDR329000	185,4	53,3	59	4+2	N	REAR
750	FDR329000	185,4	53,3	59	4+2	N	REAR
YUGO	FDR329000	185,4	53,3	59	4+2	N	REAR
YUGO FLORIDA	FDR329000	185,4	53,3	59	4+2	N	REAR

WHERE FERODO PRODUCTS STOP, THAT'S WHERE FERODO SUPPORT STARTS

Different types of possible brake problems demand different types of information. Ferodo has structured technical data and support to meet those needs.



WHERE TO BUY

Find your Ferodo parts near you.

CAR OF THE MONTH

Discover all of our latest NPI's.

TECHNICAL SUPPORT

From problem solvers to step-by-step installation guides.



ANTI-COUNTERFEIT CHECK

Enter the unique product code on your Ferodo part and verify it's authenticity.

PART FINDER

Search for Ferodo products with our easy part finder or by your interchange number.

CAMPUS

F-M CAMPUS ONLINE TRAINING

Easy access to in-depth training at your convenience.
Compatible with personal computer, iOS and Android.

NEWSLETTER

Subscribe now for a monthly update.